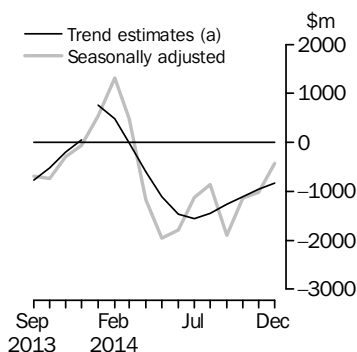


INTERNATIONAL TRADE IN GOODS AND SERVICES

AUSTRALIA

EMBARGO: 11.30AM (CANBERRA TIME) TUES 3 FEB 2015

Balance on Goods and Services



(a) A trend break has been applied to January 2014.

KEY FIGURES

	Oct 2014	Nov 2014	Dec 2014	Nov 14 to Dec 14 %
	\$m	\$m	\$m	change
BALANCE ON GOODS AND SERVICES				
Trend estimates	-1 114	-959	-830	13
Seasonally adjusted	-1 140	-1 016	-436	57
CREDITS (Exports of goods and services)				
Trend estimates	26 777	26 927	27 049	—
Seasonally adjusted	26 824	26 869	27 243	1
DEBITS (Imports of goods and services)				
Trend estimates	27 890	27 886	27 879	—
Seasonally adjusted	27 964	27 886	27 680	-1

— nil or rounded to zero (including null cells)

KEY POINTS

BALANCE ON GOODS AND SERVICES

- In trend terms, the *balance on goods and services* was a deficit of \$830m in December 2014, a decrease of \$129m (13%) on the deficit in November 2014.
- In seasonally adjusted terms, the *balance on goods and services* was a deficit of \$436m in December 2014, a decrease of \$580m (57%) on the deficit in November 2014.

CREDITS (EXPORTS OF GOODS AND SERVICES)

- In seasonally adjusted terms, *goods and services credits* rose \$374m (1%) to \$27,243m. *Non-monetary gold* rose \$428m (52%) and *rural goods* rose \$331m (10%). *Non-rural goods* fell \$417m (2%). *Net exports of goods under merchanting* remained steady at \$43m. *Service credits* rose \$31m (1%).

DEBITS (IMPORTS OF GOODS AND SERVICES)

- In seasonally adjusted terms, *goods and services debits* fell \$206m (1%) to \$27,680m. *Intermediate and other merchandise goods* fell \$296m (3%) and *capital goods* fell \$5m. *Non-monetary gold* rose \$53m (22%) and *consumption goods* rose \$17m. *Service debits* rose \$25m.

2014 SITUATION

- In original terms, the *balance on goods and services* for 2014 was deficit of \$9.9b, a fall of \$0.4b (4%) on the deficit of \$10.3b recorded in 2013, resulting from a \$7.8b (2%) increase in *goods and services credits* partly offset by a \$7.3b (2%) increase in *goods and services debits*.

INQUIRIES

For further information contact Balance of Payments on Canberra (02) 6252 5540 for Goods, and International Trade in Services on Hobart (03) 6222 5926 for Services.

NOTES

FORTHCOMING ISSUES

ISSUE	RELEASE DATE
January 2015	5 March 2015
February 2015	2 April 2015
March 2015	5 May 2015
April 2015	4 June 2015
May 2015	2 July 2015
June 2015	4 August 2015



REVISIONS

Revisions have been made to incorporate the latest data relating to international trade in goods and services since the last issue of this publication:

- on an international merchandise trade basis, exports and imports have been revised back to June 2014
- on a balance of payments basis, revisions have been applied to:
 - goods credits back to June 2014
 - goods debits back to July 2013
 - services credits back to November 2014
 - services debits back to October 2013.

CHANGES IN THIS AND FORTHCOMING ISSUES

Changes in this issue:

- impacts on services series due to delays of overseas arrivals and departures data.

Changes in forthcoming issues:

- changes applied to export data on a merchandise trade basis
- changes to the AHECC
- changes to Customs Tariff import classification.

See page 4 – *Changes in this and forthcoming issues* for details.

VALUE ADJUSTMENTS

Adjustments have been made to the value of the 'metal ores and minerals' and 'coal, coke and briquettes' in the balance of payments series.

See page 9 – *Value adjustments* for details.

RELATED RELEASES

The *Australian Harmonized Export Commodity Classification (AHECC) – Electronic Publication, Jan 2012* (cat. no. 1233.0) was updated on the ABS website on 20 November 2014 to include new codes that came into effect on 1 January 2015. Please see *Changes to Australian Harmonized Export Commodity Classification (AHECC)* on page 4 under *Changes in this and forthcoming issues* for details.

PRIVACY

The *ABS Privacy Policy* outlines how the ABS will handle any personal information that you provide to the ABS.

David Kalisch
Australian Statistician

CONTENTS

	<i>page</i>
Changes in this and forthcoming issues	4
Value adjustments	9
Time series data	10
ANALYSIS	
Analysis and comments	12
TABLES	
INTERNATIONAL TRADE IN GOODS AND SERVICES – ON A BALANCE OF PAYMENTS BASIS	
1 Goods and services, summary, seasonally adjusted and trend estimates	18
2 Goods and services, summary, original	19
3 Goods credits, original	20
4 Goods debits, original	21
5 Goods credits, seasonally adjusted	22
6 Goods debits, seasonally adjusted	23
7 Goods credits, trend estimates	24
8 Goods debits, trend estimates	25
9 Services, summary, original	26
10 Services, summary, seasonally adjusted and trend estimates	27
11 Services, original, quarterly	28
INTERNATIONAL MERCHANDISE TRADE – ON AN INTERNATIONAL MERCHANDISE TRADE BASIS	
12 International merchandise exports, by commodity	29
13 International merchandise imports, by commodity	32
14 International merchandise trade, by country and country groups	35
15 International merchandise trade, by state	36
OTHER TABLES	
16 Period average exchange rates per Australian dollar	37
17 Summary of revisions, goods and services, original	38
OTHER INFORMATION	
Explanatory notes	39
Appendix – Related articles	46

CHANGES IN THIS AND FORTHCOMING ISSUES

CHANGES IN THIS ISSUE

Impacts on services series due to delays of overseas arrivals and departures data

The October 2014, November 2014 and December 2014 issues of ABS publication *Overseas Arrivals and Departures, Australia* (cat. no. 3401.0) have been delayed due to passenger card processing issues as announced by the *Department of Immigration and Border Protection* (DIBP). This delay impacts on services credits and services debits series from October 2014 onwards. As such, caution should be used when interpreting the recent services credits and services debits estimates as they are based on modelled estimates rather than actual data.

The ABS and DIBP are working closely together to manage the issues and to minimise further delays to the release of these statistics. The ABS will advise new release dates in due course.

CHANGES IN FORTHCOMING ISSUES

Changes applied to export data on a merchandise trade basis

International merchandise trade exports data presented in tables 12–15 of this publication are based on information reported by exporters to the *Australian Customs and Border Protection Service* (Customs and Border Protection). At the time of initial reporting to Customs and Border Protection, the final prices at which transactions take place are not known for some commodities. The information recorded for commodities such as iron ore and coal includes a variety of prices including previous or current contract prices and the prevailing spot prices. Newly negotiated contract prices are not fully reflected in the data first reported to Customs and Border Protection.

Data published on a balance of payments basis are adjusted by using estimates of actual final transaction prices. When actual final transaction prices become available, the estimates are replaced with these data.

From January 2014 onwards, these adjustments will be made to the export data on a merchandise trade basis. This change will result in merchandise trade data being a more accurate reflection of the value of exports crossing the customs frontier from when data are first published.

Changes to AHECC

Statistical codes in the *Australian Harmonized Export Commodity Classification (AHECC) – Electronic Publication, Jan 2012* (cat. no. 1233.0) have been revised with new codes that came into effect on 1 January 2015. The changes result from the introduction of new statistical codes in Chapter 28 regarding radioactive elements and isotopes and how they relate to the *Customs (Prohibited Exports) Regulations 1958*. The changes do not impact directly on the presentation of statistics in ABS publications but will impact on detailed export statistics available on request.

The following table shows the code that closed on 31 December 2014 and the replacement codes that opened on 1 January 2015.

.....
Closed 31/12/2014 Replaced by:
28444000 28444010 and 28444090
.....

CHANGES IN THIS AND FORTHCOMING ISSUES *continued*

Changes to Customs Tariff import classification

As a result of the import classification feasibility study into the creation of specific *Combined Australian Customs Tariff Nomenclature and Statistical Classification* (Customs Tariff), new statistical codes under subheadings 7227.90.90, 7228.70.00, 7308.90.00, 7312.10.00 and 7312.90.00 have been introduced. The full Customs Tariff is available on the *Australian Customs and Border Protection Service* website, <www.customs.gov.au>.

The closing of the old codes occurred on 31 December 2014 and the opening of the new codes occurred on 1 January 2015. The final changes are shown in the table below:

Previous Customs Tariff

7227.90.90
7227.90.90.42 NR ---OTHER

New Customs Tariff

7227.90.90 ---OTHER

7227.90.90.01 T Containing indentations, ribs, grooves or other deformations produced during the rolling process

7227.90.90.02 T Of circular cross-section measuring less than 14 mm in diameter

7227.90.90.03 T Of circular cross-section measuring 14 mm or more in diameter

7227.90.90.04 T Other

New free standing descriptors

Bars and rods of alloy steel, hot-rolled, in irregularly wound coils, containing indentations, ribs, grooves or other deformations produced during rolling (excl. those of stainless, high speed or silico-manganese steel & those of 7227901069)

Bars and rods of alloy steel, hot-rolled, in irregularly wound coils, of circular cross-section measuring less than 14mm in diameter (excl. those of stainless, high speed or silico-manganese steel & those of HTISCs 7227901069 and 7227909001)

Bars and rods of alloy steel, hot-rolled, in irregularly wound coils, of circular cross-section measuring 14mm or more in diameter (excl. those of stainless, high speed or silico-manganese steel and those of HTISCs 7227901069 and 7227909001)

Bars and rods of alloy steel, hot-rolled, in irregularly wound coils (excl. those of stainless, high speed or silico-manganese steel and those of HTISCs 7227901069, 7227909001, 7227909002 and 7227909003)

Previous Customs Tariff

7228.70.00
7228.80.00.56 T - Angles, shapes and sections

New Customs Tariff

7228.70.00 - Angles, shapes and sections

7228.70.00.10 T U, I, H or L sections, not further worked than hot-rolled, hot-drawn or extruded, of a height of less than 80 mm

7228.70.00.11 T U, I, H or L sections, not further worked than hot-rolled, hot-drawn or extruded, of a height of 80 mm or more

7228.70.00.12 T Other

New free standing descriptors

U, I, H or L sections of alloy steel (excl. those of stainless steel), not further worked than hot-rolled, hot-drawn or extruded, of a height of less than 80mm

U, I, H or L sections of alloy steel (excl. those of stainless steel), not further worked than hot-rolled, hot-drawn or extruded, of a height of 80mm or more

Angles, shapes and sections of alloy steel (excl. U, I, H or L sections, not further worked than hot-rolled, hot-drawn or extruded and those of stainless steel)

CHANGES IN THIS AND FORTHCOMING ISSUES *continued*

Previous Customs Tariff

7308.90.00
7308.90.00.49 NR -OTHER

New Customs Tariff

7308.90.00 -OTHER
Columns, pillars, posts, beams, girders, bracing, gantries, brackets, struts, ties and similar structural units
. Roll formed structures

New free standing descriptors

7308.90.00.52	T	.. Hot rolled	Columns, pillars, posts, beams, girders, bracing, gantries, brackets, struts, ties and similar structural units, hot rolled, of iron or steel (excl. those of HTISCs 7308100001, 7308200002, 7308300003 and 7308400004)
7308.90.00.53	T	.. Plated or coated with zinc or with aluminium-zinc alloys, of a thickness less than 1.2 mm	Columns, pillars, posts, beams, girders, bracing, gantries, brackets, struts, ties & similar structures, roll formed, plated or coated with zinc or aluminium-zinc alloys, < 1.2mm thick, of iron or steel (excl. hot rolled & 730810 to 730840)
7308.90.00.54	T	.. Plated or coated with zinc or with aluminium-zinc alloys, of a thickness of 1.2 mm or more	Columns, pillars, posts, beams, girders, bracing, gantries, brackets, struts, ties & similar structures, roll formed, plated or coated with zinc or aluminium-zinc alloys, => 1.2mm thick, of iron or steel (excl. hot rolled & 730810 to 730840)
7308.90.00.55	T	.. Other	Columns, pillars, posts, beams, girders, bracing, gantries, brackets, struts, ties and similar structural units, roll formed, of iron or steel (excl. hot rolled; plated or coated with zinc or aluminium-zinc alloys; and HS 730810 to 730840)
7308.90.00.56	T	. Other	Columns, pillars, posts, beams, girders, bracing, gantries, brackets, struts, ties and similar structural units, of iron or steel (excl. roll formed structures and those of HTISCs 7308100001, 7308200002, 7308300003 and 7308400004)
7308.90.00.57	T	Steel grating, stairways and treads	Steel grating, stairways and treads (excl. those of HTISCs 7308100001, 7308200002, 7308300003 and 7308400004)
7308.90.00.58	T	Racking and shelving	Racking and shelving, of iron or steel (excl. those of HTISCs 7308100001, 7308200002, 7308300003 and 7308400004)
7308.90.00.59	T	Sheet-metal roofing, siding, flooring and roof drainage equipment (or rainwater goods)	Sheet-metal roofing, siding, flooring and roof drainage equipment (or rainwater goods), of iron or steel (excl. those of HTISCs 7308100001, 7308200002, 7308300003 and 7308400004)
7308.90.00.60	T	Handrails and stanchions	Handrails and stanchions, of iron or steel (excl. those of HTISCs 7308100001, 7308200002, 7308300003 and 7308400004)
7308.90.00.61	T	Other	Structures and parts of structures and plates, rods, angles, shapes, sections, tubes and the like, prepared for use in structures, of iron or steel (excl. goods of HTISCs 7308100001 to 7308900060 and prefabricated buildings of HS 9406)

CHANGES IN THIS AND FORTHCOMING ISSUES *continued*

Previous Customs Tariff

7312.10.00		- Stranded wire, ropes and cables
7312.10.00.75	KG	Brass coated steel cordage for reinforcing rubber tyres
7312.10.00.35	KG	Other

New Customs Tariff

7312.10.00		- Stranded wire, ropes and cables
	KG	Brass coated steel cordage for reinforcing rubber tyres
		Other
7312.10.00.76	KG	. Of stainless steel
	KG	. Other
	KG	.. Stress-relieved steel wire strand (for example prestressed concrete strand or low-relaxation strand) of alloy or non-alloy steel
7312.10.00.80	KG	... Of a diameter not exceeding 18 mm, containing not more than seven strands
7312.10.00.81	KG	... Other
		.. Ropes and cables, containing not more than eight strands, of alloy or non-alloy steel
7312.10.00.90	KG	... Of a diameter not exceeding 50 mm
7312.10.00.91	KG	... Of a diameter exceeding 50 mm but not exceeding 100 mm
7312.10.00.92	KG	... Of a diameter exceeding 100 mm
7312.10.00.93	KG	.. Ropes and cables, containing more than eight strands, of alloy or non-alloy steel
7312.10.00.94	KG	.. Other

New free standing descriptors

Stranded wire ropes and cables, of stainless steel, not electrically insulated (excl. brass coated steel cordage for reinforcing rubber tyres)
Stress-relieved steel wire strand (e.g. prestressed concrete or low-relaxation) not electrically insulated, diameter not exceed 18mm, with not more than 7 strands (excl. of stainless steel & brass coated cordage for reinforcing rubber tyres)
Stress-relieved steel wire strand (e.g. prestressed concrete or low-relaxation) not electrically insulated (excl. stainless steel; brass coated cord for reinforcing rubber tyres; strand with diameter not exc. 18mm & not more than 7 strands)
Stranded steel ropes and cables, not electrically insulated, of diameter not exceeding 50mm, containing not more than 8 strands (excl. stainless steel; brass coated cord for reinforcing rubber tyres; and stress-relieved steel wire strand)
Stranded steel ropes & cable, not electrically insulated, of a diameter exceed 50mm but not exceed 100mm, with not more than 8 strands (excl. stainless steel; brass coated cord for reinforcing rubber tyres; stress-relieved steel wire strand)
Stranded steel ropes and cables, not electrically insulated, of diameter exceeding 100mm, containing not more than 8 strands (excl. stainless steel; brass coated cord for reinforcing rubber tyres; and stress-relieved steel wire strand)
Stranded steel ropes and cables, not electrically insulated, containing more than 8 strands, of alloy or non-alloy steel (excl. stainless steel; brass coated cord for reinforcing rubber tyres; and stress-relieved steel wire strand)
Stranded wire, of iron or steel, not electrically insulated (excl. of stainless steel; brass coated steel cordage for reinforcing rubber tyres; stress-relieved steel wire strand; and stranded steel ropes and cables)

CHANGES IN THIS AND FORTHCOMING ISSUES *continued*

Previous Customs Tariff

7312.90.00.36 KG -OTHER

New Customs Tariff

7312.90.00 -OTHER

7312.90.00.40

KG Slings

New free standing descriptors

Plaited slings, of iron or steel, not electrically insulated

7312.90.00.41

KG Other

Plaited bands and the like (excl. slings) of iron or steel, not electrically insulated

VALUE ADJUSTMENTS

VALUE ADJUSTMENTS

International merchandise trade exports data presented in tables 12–15 of this publication are based on information provided by exporters to the *Australian Customs and Border Protection Service* (Customs and Border Protection). At the time of initial reporting to Customs and Border Protection, quantity and unit price information may be estimated for commodities such as iron ore and coal. Final quantity and/or unit price information is updated progressively in merchandise trade data as exporters revise the information provided to Customs and Border Protection. When additional information on quantity and/or unit price for these commodities is available, the ABS may adjust the balance of payments series in current price, original terms to reflect actual transaction values.

In most instances, transfer of ownership occurs when goods cross the customs frontier. In certain circumstances the ownership of large value capital expenditure items can occur prior to the items crossing the customs frontier. The ABS may adjust the relevant balance of payments series to record the timing when transfer of ownership was effected.

Goods credits

Iron ore and coal (in original terms)

- negative adjustments of \$50m and \$410m have been applied to the metal ores and minerals component in the balance of payments series for November and December 2014 respectively. These adjustments take into account additional information on the unit value of iron ore exports. All previous adjustments have been removed.
 - In the international merchandise trade series, the unit value of metal ores and minerals remained steady between October and November 2014 and rose 11% between November and December 2014.
 - In the balance of payments series, the unit price of metal ores and minerals fell 1% between October and November 2014 and rose 6% between November and December 2014.
- negative adjustments of \$50m and \$80m have been applied to the coal, coke and briquettes component in the balance of payments series for November and December 2014 respectively. These adjustments take into account additional information on the unit value of hard coking and semi-soft coal exports. All previous adjustments have been removed.
 - In the international merchandise trade series, the unit value of coal, coke and briquettes rose 5% between October and November 2014 and rose 3% between November and December 2014.
 - In the balance of payments series, the unit value of coal, coke and briquettes rose 4% between October and November 2014 and rose 2% between November and December 2014.

Goods debits

Capital expenditure (in original terms)

- capital goods n.e.s. includes an estimate of expenditure on capital goods that have changed ownership but have not yet crossed the customs frontier.

TIME SERIES DATA

TIME SERIES DATA

Tables 1 to 16 of this publication are available free on the ABS website <www.abs.gov.au> from the 'Downloads' tab of this issue with longer time series. A number of these tables present more detailed breakdowns than included in the publication. A number of additional tables are available free on the ABS website.

Tables with more detailed breakdowns:

11a Services credits: Original – Quarter¹

11b Services debits: Original – Quarter¹

12b Merchandise exports by Standard International Trade Classification (3 digit), FOB Value

13b Merchandise imports by Standard International Trade Classification (3 digit), Customs Value

14a Merchandise exports, Country and Country Groups, FOB Value

14b Merchandise imports, Country and Country Groups, Customs Value

Additional tables:

31 Merchandise exports by Broad Economic Category (BEC)

32a Merchandise exports, Industry (ANZSIC 2006), FOB Value – from July 2005 onward

32b Merchandise exports, Industry (ANZSIC 1993), FOB Value – from January 1988 to June 2009

33 Merchandise imports by Broad Economic Category (BEC)

34 Merchandise imports by Balance of Payments Broad Economic Category (BoPBEC)

35a Merchandise imports, Industry (ANZSIC 2006), Customs Value – from July 2005 onward

35b Merchandise imports, Industry (ANZSIC 1993), Customs Value – from January 1988 to June 2009

36 Merchandise exports, State by Country and Country Groups

37 Merchandise imports, State by Country and Country Groups

91 Monthly seasonal adjustment factors and forward factors for 12 months.

¹ With a one quarter lag for the more detailed breakdowns.

TIME SERIES DATA *continued*

TRADE IN SERVICES DATA CUBES

Trade in services data cubes are usually updated on an annual basis. Calendar year (cat. no. 5368.0.55.004) statistics are updated following the March issue of this publication and financial year (cat. no. 5368.0.55.003) statistics are updated following the September issue of this publication.

The following tables were included in the calendar and financial year data cubes:

- 1 International trade in services, credits, state by year
- 2 International trade in services, credits, year by state
- 3 International trade in services, debits, state by year
- 4 International trade in services, debits, year by state
- 5 International trade in services, credits, year by country and service
- 6 International trade in services, credits, service by year and by country
- 7 International trade in services, debits, year by country and service
- 8 International trade in services, debits, service by year and by country
- 9 International trade in services, credits, year by country and travel service
- 10 International trade in services, debits, year by country and travel service
- 11 International trade in services, credits, education related travel, by educational sector, by type of expenditure by year.

ANALYSIS AND COMMENTS

BALANCE ON GOODS AND SERVICES

In trend terms, the balance on goods and services was a deficit of \$830m in December 2014, a decrease of \$129m (13%) on the deficit in November 2014.

In seasonally adjusted terms, the balance on goods and services was a deficit of \$436m in December 2014, a decrease of \$580m (57%) on the deficit in November 2014.

The sum of seasonally adjusted balance for the three months to December 2014 was a deficit of \$2,592m, a fall of \$1,307m (34%) on the deficit of \$3,899m for the three months to September 2014. However, if seasonal factors used in compiling the quarterly balance of payments are applied, the preliminary December quarter 2014 deficit was \$2,557m, a fall of \$1,308m (34%) on the September quarter 2014 deficit of \$3,865m.

Revised quarterly estimates will be included in *Balance of Payments – Goods and Services, Preliminary Quarterly Estimates* (cat. no. 5302.0.55.004) and *Balance of Payments and International Investment Position, Australia* (cat. no. 5302.0).

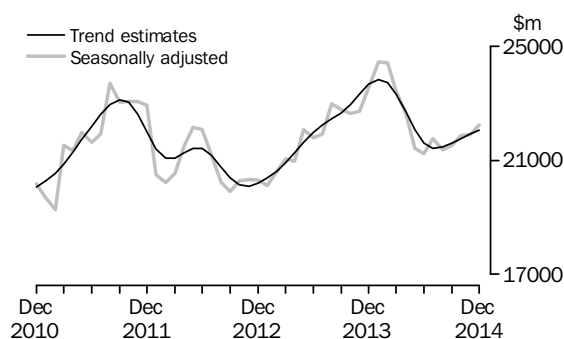
EXPORTS OF GOODS AND SERVICES

Between November and December 2014, the trend estimate of goods and services credits rose \$122m to \$27,049m.

In seasonally adjusted terms, goods and services credits rose \$374m (1%) to \$27,243m. Non-monetary gold rose \$428m (52%) and rural goods rose \$331m (10%). Non-rural goods fell \$417m (2%). Net exports of goods under merchanting remained steady at \$43m. Service credits rose \$31m (1%).

Exports of goods

GOODS CREDITS



RURAL GOODS

In trend terms, exports of rural goods rose \$43m (1%) to \$3,389m.

In seasonally adjusted terms, exports of rural goods rose \$331m (10%) to \$3,630m.

The main components contributing to the rise in seasonally adjusted estimates were:

- other rural, up \$220m (17%)
- cereal grains and cereal preparations, up \$69m (10%).

ANALYSIS AND COMMENTS *continued*

Exports of goods *continued*

NON-RURAL GOODS

In trend terms, exports of non-rural goods rose \$105m (1%) to \$17,421m.

In seasonally adjusted terms, exports of non-rural goods fell \$417m (2%) to \$17,291m.

The main components contributing to the fall in seasonally adjusted estimates were:

- other mineral fuels, down \$585m (20%)
- coal, coke and briquettes, down \$46m (1%).

Partly offsetting these falls were:

- metals (excl. non-monetary gold), up \$151m (15%)
- metal ores and minerals, up \$130m (2%).

For price and volume details, see the *Selected commodities* section on page 16.

NET EXPORTS OF GOODS UNDER MERCHANTING

In trend terms, net exports of goods under merchanting rose \$2m (5%) to \$45m.

In seasonally adjusted terms, net exports of goods under merchanting remained steady at \$43m.

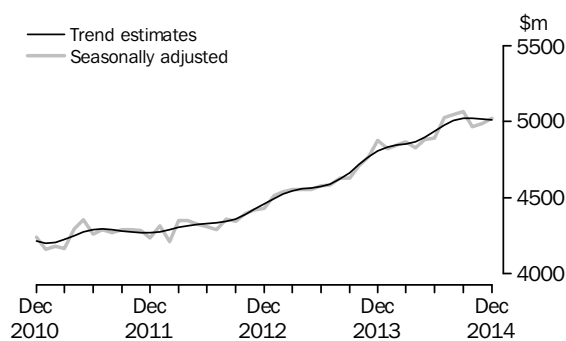
NON-MONETARY GOLD

In trend terms, exports of non-monetary gold fell \$23m (2%) to \$1,181m.

In original and seasonally adjusted terms, exports of non-monetary gold rose \$428m (52%) to \$1,259m.

Exports of services

SERVICES CREDITS



In trend terms, service credits fell \$5m to \$5,013m.

In seasonally adjusted terms, service credits rose \$31m (1%) to \$5,019m.

The main components contributing to the rise in seasonally adjusted estimates were:

- travel, up \$22m (1%)
- other services, up \$7m.

In seasonally adjusted terms, tourism related service credits rose \$20m (1%) to \$3,186m.

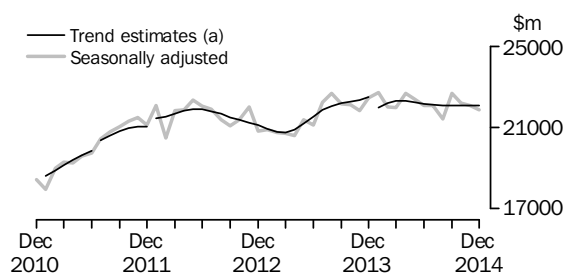
IMPORTS OF GOODS AND SERVICES

Between November and December 2014, the trend estimate of goods and services debits fell \$7m to \$27,879m.

In seasonally adjusted terms, goods and services debits fell \$206m (1%) to \$27,680m. Intermediate and other merchandise goods fell \$296m (3%) and capital goods fell \$5m. Non-monetary gold rose \$53m (22%) and consumption goods rose \$17m. Service debits rose \$25m.

Imports of goods

GOODS DEBITS



(a) Trend breaks have been applied to January 2011, July 2011, January 2012 and January 2014.

CONSUMPTION GOODS

In trend terms, imports of consumption goods rose \$30m to \$6,987m.

In seasonally adjusted terms, imports of consumption goods rose \$17m to \$7,004m.

The main component contributing to the rise in seasonally adjusted estimates was household electrical items, up \$54m (14%).

Partly offsetting this rise was textiles, clothing and footwear, down \$31m (3%).

CAPITAL GOODS

In trend terms, imports of capital goods rose \$57m (1%) to \$5,547m.

In seasonally adjusted terms, imports of capital goods fell \$5m to \$5,457m.

The main components contributing to the fall in seasonally adjusted estimates were:

- machinery and industrial equipment, down \$59m (3%)
- industrial transport equipment n.e.s., down \$26m (4%)
- civil aircraft and confidentialised items, down \$22m (4%).

Partly offsetting these falls was capital goods n.e.s., up \$95m (13%).

INTERMEDIATE AND OTHER MERCHANDISE GOODS

In trend terms, imports of intermediate and other merchandise goods fell \$96m (1%) to \$9,243m.

In seasonally adjusted terms, imports of intermediate and other merchandise goods fell \$296m (3%) to \$9,092m.

The main components contributing to the fall in seasonally adjusted estimates were:

- fuels and lubricants, down \$496m (16%)
- iron and steel, down \$51m (15%).

Partly offsetting these falls was processed industrial supplies n.e.s., up \$303m (13%).

ANALYSIS AND COMMENTS *continued*

Imports of goods continued

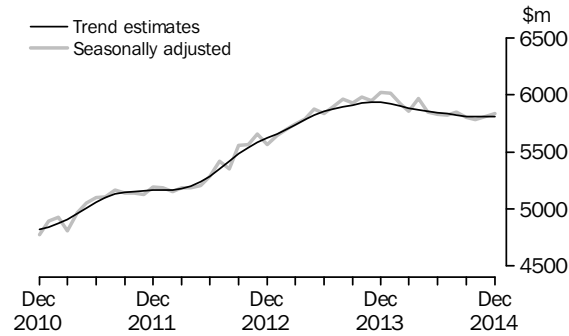
NON-MONETARY GOLD

In trend terms, imports of non-monetary gold fell \$1m to \$291m.

In original and seasonally adjusted terms, imports of non-monetary gold rose \$53m (22%) to \$294m.

Imports of services

SERVICES DEBITS



In trend terms, imports of services debits rose \$1m to \$5,810m.

In seasonally adjusted terms, imports of service debits rose \$25m to \$5,833m

The main component contributing to the rise in seasonally adjusted estimates was other services, up \$28m (1%).

In seasonally adjusted terms, imports of tourism related service debits fell \$12m to \$2,930m.

ANALYSIS AND COMMENTS *continued*

Selected commodities

SELECTED COMMODITIES, Quantity and unit value analysis: International merchandise trade basis (a)— Original terms

		CHANGE IN					
		Jul	Aug	Sep	Oct	Nov	Dec
		2014	2014	2014	2014	2014	2014
		%	%	%	%	%	%
.....							
IRON ORE							
Lump							
Quantity		9	1	-3	-9	1	19
Unit value		-7	-2	-4	—	p-2	p6
Fines							
Quantity		4	3	-4	7	-8	9
Unit value		—	-2	-4	-5	p-4	p12
.....							
COAL							
Hard coking							
Quantity		-17	13	3	—	5	-11
Unit value		-1	—	-1	7	p8	p5
Semi-soft							
Quantity		-4	5	5	-2	-13	33
Unit value		-2	-1	2	3	p6	p4
Thermal							
Quantity		14	—	-9	1	2	12
Unit value		-2	-1	2	-2	3	5

— nil or rounded to zero (including null cells)

p preliminary figure or series subject to revision

(a) Data in this table are on a revised international merchandise trade basis and exclude value adjustments applied to balance of payments series.

Unit values in this publication are presented in Australian dollar terms. Movements in the unit values for some commodities incorporate movements in the United States dollar prices reported to *Customs and Border Protection* and movements in the Australian dollar to United States dollar exchange rate.

On an international merchandise trade basis, in original terms (noting the footnote in the above table), between November and December 2014 the largest movements recorded for the following selected commodities were:

Iron ore lump rose \$270m (26%), with quantities up 19% and unit values up 6%.

Exports to:

- China (excluding SARs and Taiwan) rose \$168m (24%), with quantities up 18% and unit values up 5%
- Japan rose \$96m (41%), with quantities up 32% and unit values up 6%.

ANALYSIS AND COMMENTS *continued*

Selected commodities continued

Iron ore fines rose \$713m (21%), with quantities up 9% and unit values up 12%.

Exports to:

- China (excluding SARs and Taiwan) rose \$536m (20%), with quantities up 8% and unit values up 11%
- Japan rose \$126m (36%), with quantities up 24% and unit values up 10%.

Hard coking coal fell \$94m (7%), with quantities down 11% and unit values up 5%.

Exports to China (excluding SARs and Taiwan) fell \$222m (44%), with quantities down 47% and unit values up 5%.

Partly offsetting this fall were exports to:

- India, up \$52m (16%), with quantities up 8% and unit values up 7%
- the Republic of Korea, up \$50m (74%), with quantities up 66% and unit values up 5%.

Semi-soft coal rose \$203m (39%), with quantities up 33% and unit values up 4%.

Exports to:

- Japan rose \$97m (63%), with quantities up 61% and unit values up 1%
- India rose \$62m (105%), with quantities up 95% and unit values up 5%.

Thermal coal rose \$239m (18%), with quantities up 12% and unit values up 5%.

Exports to:

- the Republic of Korea, up \$111m (56%), with quantities up 53% and unit values up 2%
- Taiwan, up \$73m (58%), with quantities up 48% and unit values up 7%.

GOODS AND SERVICES (a), Summary—Seasonally Adjusted and Trend Estimates

	Jan 2014	Feb 2014	Mar 2014	Apr 2014	May 2014	Jun 2014	Jul 2014	Aug 2014	Sep 2014	Oct 2014	Nov 2014	Dec 2014
	\$m	\$m	\$m	\$m	\$m	\$m	\$m	\$m	\$m	\$m	\$m	\$m
SEASONALLY ADJUSTED												
BALANCE												
On goods and services	548	1 311	478	-1 173	-1 954	-1 786	-1 126	-869	-1 904	-1 140	-1 016	-436
CREDITS												
Total goods and services	29 270	29 253	28 311	27 480	26 282	26 119	26 775	26 398	26 576	26 824	26 869	27 243
Total goods	24 447	24 404	23 443	22 654	21 401	21 225	21 746	21 352	21 511	21 855	21 881	22 224
Rural goods(b)	3 706	3 506	3 487	3 260	3 170	3 311	3 397	3 226	3 270	3 141	3 299	3 630
Non-rural goods(b)	19 351	19 643	18 754	18 319	17 217	16 830	17 093	17 122	16 652	17 321	17 708	17 291
Net exports of goods under merchandise(c)	5	5	4	8	8	10	34	34	34	43	43	43
Non-monetary gold(c)	1 386	1 250	1 198	1 067	1 006	1 074	1 223	970	1 555	1 351	831	1 259
Total services	4 823	4 849	4 868	4 826	4 881	4 894	5 029	5 045	5 066	4 969	4 988	5 019
DEBITS												
Total goods and services	-28 723	-27 942	-27 833	-28 653	-28 236	-27 905	-27 901	-27 267	-28 480	-27 964	-27 886	-27 680
Total goods	-22 709	-22 019	-21 979	-22 688	-22 383	-22 073	-22 081	-21 421	-22 675	-22 178	-22 077	-21 847
Consumption goods	-6 989	-6 889	-6 817	-6 935	-6 863	-6 791	-6 848	-6 793	-6 980	-6 865	-6 987	-7 004
Capital goods	-5 135	-5 076	-4 927	-5 549	-5 209	-5 010	-4 896	-5 306	-5 458	-5 525	-5 462	-5 457
Intermediate and other merchandise goods	-10 328	-9 698	-9 921	-9 896	-9 965	-9 940	-10 082	-9 092	-9 870	-9 458	-9 388	-9 092
Non-monetary gold(c)	-256	-356	-315	-308	-346	-333	-255	-230	-367	-331	-241	-294
Total services	-6 014	-5 923	-5 854	-5 965	-5 852	-5 832	-5 820	-5 846	-5 805	-5 786	-5 808	-5 833
TREND ESTIMATES (d)												
BALANCE												
On goods and services	764	481	-12	-594	-1 117	-1 464	-1 563	-1 451	-1 270	-1 114	-959	-830
CREDITS												
Total goods and services	28 669	28 566	28 171	27 574	26 969	26 535	26 385	26 463	26 622	26 777	26 927	27 049
Total goods	23 834	23 719	23 318	22 706	22 071	21 596	21 406	21 457	21 603	21 755	21 909	22 037
Rural goods(b)	3 471	3 487	3 450	3 382	3 315	3 266	3 251	3 256	3 274	3 303	3 346	3 389
Non-rural goods(b)	19 118	19 032	18 714	18 209	17 649	17 200	16 982	16 978	17 077	17 195	17 316	17 421
Net exports of goods under merchandise	9	6	5	7	11	18	25	31	36	40	43	45
Non-monetary gold	1 235	1 195	1 150	1 108	1 096	1 111	1 149	1 192	1 216	1 216	1 204	1 181
Total services	4 835	4 847	4 853	4 868	4 898	4 939	4 979	5 006	5 019	5 021	5 018	5 013
DEBITS												
Total goods and services	-27 905	-28 085	-28 183	-28 168	-28 086	-27 999	-27 947	-27 914	-27 892	-27 890	-27 886	-27 879
Total goods	-21 983	-22 180	-22 298	-22 301	-22 233	-22 157	-22 114	-22 092	-22 079	-22 081	-22 077	-22 069
Consumption goods	-6 812	-6 859	-6 885	-6 880	-6 859	-6 840	-6 843	-6 862	-6 890	-6 923	-6 957	-6 987
Capital goods(e)	-5 029	-5 113	-5 160	-5 164	-5 149	-5 150	-5 185	-5 248	-5 331	-5 417	-5 490	-5 547
Intermediate and other merchandise goods	-9 828	-9 891	-9 932	-9 939	-9 912	-9 860	-9 787	-9 685	-9 563	-9 447	-9 339	-9 243
Non-monetary gold	-314	-317	-321	-318	-313	-306	-300	-296	-295	-294	-292	-291
Total services	-5 923	-5 905	-5 885	-5 867	-5 853	-5 842	-5 833	-5 823	-5 813	-5 809	-5 809	-5 810
(a) For sign conventions, see paragraph 15 of the Explanatory Notes.												
(b) For all time periods, estimates for sugar, sugar preparations and honey are included in Non-rural goods.												
(c) This component is not seasonally adjusted.												
(d) Caution should be used when interpreting recent trend estimates as they may be affected by unusual economic factors. For more details on trend estimates, please see paragraph 19 of the Explanatory Notes.												
(e) A trend break of \$650m has been applied to Capital goods debits and related aggregates in January 2014. This trend break will be re-assessed in a future issue.												

GOODS AND SERVICES(a), Summary—Original

	Jan 2014	Feb 2014	Mar 2014	Apr 2014	May 2014	Jun 2014	Jul 2014	Aug 2014	Sep 2014	Oct 2014	Nov 2014	Dec 2014
	\$m	\$m	\$m	\$m	\$m	\$m	\$m	\$m	\$m	\$m	\$m	\$m
BALANCE												
On goods and services	-2 065	2 248	2 621	-556	-974	-868	-1 850	-235	-3 501	-2 858	-2 326	492
CREDITS												
Total goods and services	26 671	27 401	29 068	27 132	26 807	26 499	27 246	27 128	26 357	27 232	26 228	28 952
Total goods	22 030	22 476	23 990	22 253	22 011	21 935	22 252	21 931	21 407	22 065	21 195	23 998
Rural goods(b)	3 195	3 460	3 813	3 281	3 506	3 441	3 514	3 136	3 052	3 074	3 180	3 878
Non-rural goods(b)	17 444	17 761	18 975	17 897	17 491	17 410	17 481	17 791	16 766	17 597	17 141	18 818
Net exports of goods under merchandising	5	5	4	8	8	10	34	34	34	43	43	43
Non-monetary gold	1 386	1 250	1 198	1 067	1 006	1 074	1 223	970	1 555	1 351	831	1 259
Total services	4 641	4 925	5 078	4 879	4 796	4 564	4 994	5 197	4 950	5 167	5 033	4 954
DEBITS												
Total goods and services	-28 736	-25 153	-26 447	-27 688	-27 781	-27 367	-29 096	-27 363	-29 858	-30 090	-28 554	-28 460
Total goods	-22 394	-20 049	-20 997	-21 876	-22 236	-21 535	-22 926	-21 505	-23 640	-23 900	-22 859	-22 307
Consumption goods	-6 823	-6 198	-6 263	-6 473	-6 616	-6 318	-7 148	-6 894	-7 422	-7 832	-7 446	-7 252
Capital goods	-4 870	-4 410	-4 748	-5 253	-5 308	-5 208	-5 052	-5 166	-5 739	-5 805	-5 769	-5 794
Intermediate and other merchandise goods	-10 445	-9 085	-9 671	-9 842	-9 966	-9 676	-10 471	-9 215	-10 112	-9 932	-9 403	-8 967
Non-monetary gold	-256	-356	-315	-308	-346	-333	-255	-230	-367	-331	-241	-294
Total services	-6 342	-5 104	-5 450	-5 812	-5 545	-5 832	-6 170	-5 858	-6 218	-6 190	-5 695	-6 153

(a) For sign conventions, see paragraph 15 of the Explanatory Notes.

(b) For all time periods, estimates for sugar, sugar preparations and honey are included in Non-rural goods.

							6 MONTHS ENDED		
							DECEMBER		
	2011-12	2012-13	2013-14	Oct 2014	Nov 2014	Dec 2014	2013	2014	Change
	\$m	\$m	\$m	\$m	\$m	\$m	\$m	\$m	%
Total goods credits	265 722	248 917	273 815	22 065	21 195	23 998	139 120	132 848	-4.5
General merchandise	248 861	232 405	259 509	20 671	20 321	22 696	131 835	125 428	-4.9
<i>Rural goods</i>	34 733	36 273	39 800	3 074	3 180	3 878	19 104	19 834	3.8
Meat and meat preparations	7 121	7 645	9 862	1 202	1 203	1 241	4 864	6 592	35.5
Cereal grains and cereal preparations	9 061	9 285	9 317	416	488	744	3 870	3 533	-8.7
Wool and sheepskins	3 123	2 869	2 877	266	270	315	1 523	1 442	-5.3
Other rural (a)	15 428	16 474	17 744	1 190	1 219	1 578	8 847	8 267	-6.6
<i>Non-rural goods</i>	214 128	196 132	219 709	17 597	17 141	18 818	112 731	105 594	-6.3
Metal ores and minerals	85 408	79 141	96 555	6 885	6 475	7 610	49 608	41 918	-15.5
Coal, coke and briquettes	48 215	38 914	40 148	3 132	3 273	3 603	21 055	19 134	-9.1
Other mineral fuels	25 692	26 424	29 187	2 590	2 680	2 520	14 101	15 750	11.7
Metals (excl. non-monetary gold)	11 699	10 478	11 147	1 069	900	1 271	5 454	5 854	7.3
Machinery	8 838	8 709	9 096	827	883	954	4 665	5 082	8.9
Transport equipment	4 188	4 332	5 068	405	404	499	2 736	2 783	1.7
Other manufactures	16 916	16 034	16 770	1 451	1 471	1 396	8 818	8 589	-2.6
Other non-rural (incl. sugar and beverages) (a)	11 504	10 422	9 982	1 088	903	824	5 431	5 594	3.0
Goods procured in ports by carriers	1 668	1 678	1 756	150	152	141	863	890	3.1
Net exports of goods under merchanting	211	277	187	43	43	43	147	231	57.1
Goods acquired under merchanting (negative exports)	-1 475	-1 479	-1 151	-106	-106	-106	-505	-623	-23.4
Goods sold under merchanting	1 686	1 756	1 338	149	149	149	652	854	31.0
Non-monetary gold	16 650	16 235	14 119	1 351	831	1 259	7 138	7 189	0.7

(a) For all time periods, estimates for sugar, sugar preparations and honey are included in Other non-rural.

GOODS DEBITS(a), Original

							6 MONTHS ENDED		Change
							DECEMBER		
	2011-12	2012-13	2013-14	Oct 2014	Nov 2014	Dec 2014	2013	2014	
	\$m	\$m	\$m	\$m	\$m	\$m	\$m	\$m	%
Total goods debits	-256 990	-253 537	-267 405	-23 900	-22 859	-22 307	-138 318	-137 137	0.9
General merchandise	-250 282	-248 368	-263 191	-23 569	-22 618	-22 013	-136 018	-135 419	0.4
Consumption goods	-72 322	-75 058	-81 471	-7 832	-7 446	-7 252	-42 780	-43 994	-2.8
Food and beverages, mainly for consumption	-9 812	-10 214	-11 888	-1 238	-1 100	-1 195	-6 193	-6 676	-7.8
Household electrical items	-5 134	-5 017	-5 135	-520	-500	-457	-2 740	-2 828	-3.2
Non-industrial transport equipment	-17 442	-18 778	-19 336	-1 693	-1 792	-1 838	-10 448	-10 155	2.8
Textiles, clothing and footwear	-11 218	-11 936	-13 542	-1 217	-1 091	-1 049	-6 735	-6 966	-3.4
Toys, books and leisure goods	-5 237	-5 067	-5 521	-661	-566	-485	-3 033	-3 252	-7.2
Consumption goods n.e.s.	-23 479	-24 046	-26 049	-2 503	-2 397	-2 228	-13 631	-14 117	-3.6
Capital goods	-68 963	-65 000	-64 860	-5 805	-5 769	-5 794	-35 063	-33 325	5.0
Machinery and industrial equipment	-20 340	-20 322	-20 880	-1 720	-1 867	-1 771	-10 612	-10 871	-2.4
ADP equipment	-8 226	-7 875	-8 421	-764	-881	-930	-4 353	-4 557	-4.7
Telecommunications equipment	-7 892	-8 272	-8 338	-989	-1 107	-1 005	-4 536	-5 318	-17.2
Civil aircraft and confidentialised items(b)	-6 674	-4 295	-5 798	-352	-570	-548	-2 701	-3 694	-36.8
Industrial transport equipment n.e.s.	-9 442	-9 427	-8 001	-697	-667	-698	-4 271	-3 970	7.0
Capital goods n.e.s.	-16 389	-14 809	-13 422	-1 283	-677	-842	-8 590	-4 915	42.8
Intermediate and other merchandise goods	-108 997	-108 310	-116 860	-9 932	-9 403	-8 967	-58 175	-58 100	0.1
Food and beverages, mainly for industry	-1 251	-1 136	-1 417	-138	-121	-134	-690	-786	-13.9
Primary industrial supplies n.e.s.	-1 678	-1 546	-1 403	-203	-97	-107	-663	-868	-30.9
Fuels and lubricants	-38 288	-38 932	-42 351	-3 168	-3 154	-2 658	-20 912	-19 305	7.7
Parts for transport equipment	-10 770	-10 243	-10 362	-946	-847	-786	-5 241	-5 337	-1.8
Parts for ADP equipment	-713	-599	-624	-55	-62	-55	-286	-333	-16.4
Other parts for capital goods	-14 103	-13 716	-14 704	-1 195	-1 255	-1 282	-7 564	-7 466	1.3
Organic and inorganic chemicals	-4 504	-4 118	-3 865	-344	-363	-315	-1 932	-1 928	0.2
Paper and paperboard	-2 178	-2 210	-2 308	-226	-192	-175	-1 179	-1 217	-3.2
Textile yarn and fabrics	-1 168	-1 074	-1 248	-130	-112	-105	-636	-679	-6.8
Iron and steel	-4 002	-3 931	-4 095	-453	-331	-274	-1 836	-2 193	-19.4
Plastics	-3 055	-3 024	-3 620	-370	-314	-288	-1 843	-1 889	-2.5
Processed industrial supplies n.e.s.	-24 900	-25 614	-28 574	-2 481	-2 353	-2 614	-14 233	-14 876	-4.5
Other merchandise goods(b)	-471	-472	-505	-69	-48	-20	-263	-303	-15.2
Goods procured in ports by carriers	-1 916	-1 695	-1 784	-154	-154	-154	-897	-920	-2.6
Non-monetary gold	-6 708	-5 169	-4 214	-331	-241	-294	-2 300	-1 718	25.3

(a) For sign conventions, see paragraph 15 of the Explanatory Notes.

(b) From July 2008, commodities subject to a 'no commodity details' or 'no value details' restriction are included in Civil aircraft and confidentialised items. For earlier periods, commodities subject to a 'no commodity details' or 'no value details' restriction are included in Other merchandise goods.

	Mar 2014	Apr 2014	May 2014	Jun 2014	Jul 2014	Aug 2014	Sep 2014	Oct 2014	Nov 2014	Dec 2014
	\$m	\$m	\$m	\$m	\$m	\$m	\$m	\$m	\$m	\$m
Total goods credits	23 443	22 654	21 401	21 225	21 746	21 352	21 511	21 855	21 881	22 224
General merchandise	22 241	21 579	20 387	20 141	20 489	20 348	19 922	20 461	21 007	20 922
<i>Rural goods</i>	3 487	3 260	3 170	3 311	3 397	3 226	3 270	3 141	3 299	3 630
Meat and meat preparations	889	877	835	890	968	975	1 016	1 078	1 092	1 114
Cereal grains and cereal preparations	838	778	731	679	737	644	655	532	703	772
Wool and sheepskins	207	208	213	220	227	249	262	239	243	263
Other rural (a)	1 553	1 397	1 392	1 521	1 464	1 358	1 336	1 292	1 261	1 481
<i>Non-rural goods</i>	18 754	18 319	17 217	16 830	17 093	17 122	16 652	17 321	17 708	17 291
Metal ores and minerals	8 170	8 025	7 254	6 677	7 082	7 141	6 693	6 968	6 838	6 968
Coal, coke and briquettes(b)	3 525	3 184	3 057	3 005	3 048	3 171	2 992	3 060	3 194	3 148
Other mineral fuels(c)	2 651	2 665	2 406	2 631	2 514	2 342	2 473	2 491	2 951	2 366
Metals (excl. non-monetary gold)	914	991	846	976	917	849	922	1 075	1 018	1 169
Machinery	761	775	792	752	776	768	772	804	877	854
Transport equipment	414	399	478	414	444	476	431	394	408	428
Other manufactures	1 398	1 340	1 393	1 374	1 360	1 361	1 346	1 398	1 393	1 363
Other non-rural (incl. sugar and beverages)(a)	771	790	841	854	800	868	875	983	880	851
Goods procured in ports by carriers(c)	150	151	149	148	152	146	148	150	149	146
Net exports of goods under merchanting(d)	4	8	8	10	34	34	34	43	43	43
Non-monetary gold(d)	1 198	1 067	1 006	1 074	1 223	970	1 555	1 351	831	1 259

- (a) For all time periods, estimates for sugar, sugar preparations and honey are included in Other non-rural.
- (b) From July 1971 to June 2005, only a length-of-month adjustment has been applied to this component. From July 2005, this component is seasonally adjusted using seasonal factors derived from a monthly volume series.

- (c) In using these seasonally adjusted series, care should be exercised because of the difficulties associated with reliably estimating the seasonal pattern.
- (d) This component is not seasonally adjusted.

GOODS DEBITS(a), Seasonally Adjusted

	Mar 2014	Apr 2014	May 2014	Jun 2014	Jul 2014	Aug 2014	Sep 2014	Oct 2014	Nov 2014	Dec 2014
	\$m	\$m	\$m	\$m	\$m	\$m	\$m	\$m	\$m	\$m
Total goods debits	-21 979	-22 688	-22 383	-22 073	-22 081	-21 421	-22 675	-22 178	-22 077	-21 847
General merchandise	-21 664	-22 380	-22 037	-21 740	-21 826	-21 191	-22 308	-21 847	-21 836	-21 553
<i>Consumption goods</i>	-6 817	-6 935	-6 863	-6 791	-6 848	-6 793	-6 980	-6 865	-6 987	-7 004
Food and beverages, mainly for consumption	-1 010	-1 016	-1 072	-1 024	-1 003	-1 021	-1 021	-1 032	-1 040	-1 066
Household electrical items	-445	-434	-446	-425	-455	-446	-419	-417	-400	-454
Non-industrial transport equipment	-1 526	-1 566	-1 572	-1 565	-1 573	-1 583	-1 701	-1 594	-1 703	-1 683
Textiles, clothing and footwear	-1 164	-1 221	-1 131	-1 142	-1 159	-1 094	-1 145	-1 146	-1 140	-1 109
Toys, books and leisure goods	-475	-475	-459	-477	-472	-481	-478	-475	-478	-486
Consumption goods n.e.s.	-2 197	-2 224	-2 184	-2 157	-2 187	-2 169	-2 218	-2 201	-2 227	-2 206
<i>Capital goods</i>	-4 927	-5 549	-5 209	-5 010	-4 896	-5 306	-5 458	-5 525	-5 462	-5 457
Machinery and industrial equipment	-1 763	-1 693	-1 811	-1 765	-1 760	-1 646	-1 873	-1 701	-1 773	-1 714
ADP equipment	-713	-689	-660	-667	-591	-680	-744	-761	-822	-807
Telecommunications equipment	-691	-841	-719	-645	-674	-746	-781	-841	-875	-897
Civil aircraft and confidentialised items(b)(c)	-545	-479	-547	-470	-624	-860	-740	-352	-570	-548
Industrial transport equipment n.e.s.	-630	-665	-594	-647	-618	-598	-632	-651	-708	-682
Capital goods n.e.s.	-584	-1 182	-879	-816	-629	-776	-689	-1 219	-713	-808
<i>Intermediate and other merchandise goods</i>	-9 921	-9 896	-9 965	-9 940	-10 082	-9 092	-9 870	-9 458	-9 388	-9 092
Food and beverages, mainly for industry	-124	-118	-138	-136	-122	-134	-120	-129	-124	-135
Primary industrial supplies n.e.s.(d)	-217	-108	-132	-118	-129	-133	-153	-148	-96	-117
Fuels and lubricants(c)	-3 505	-3 418	-3 634	-3 626	-3 756	-2 927	-3 642	-3 168	-3 154	-2 658
Parts for transport equipment	-863	-872	-863	-873	-985	-790	-848	-888	-849	-826
Parts for ADP equipment	-56	-58	-54	-52	-56	-47	-51	-55	-67	-60
Other parts for capital goods	-1 234	-1 189	-1 191	-1 169	-1 209	-1 116	-1 219	-1 169	-1 266	-1 237
Organic and inorganic chemicals	-312	-352	-356	-356	-303	-313	-272	-324	-330	-336
Paper and paperboard	-188	-208	-202	-199	-192	-194	-192	-188	-191	-188
Textile yarn and fabrics	-104	-107	-105	-104	-103	-104	-107	-115	-110	-111
Iron and steel	-363	-455	-394	-327	-347	-355	-381	-394	-349	-298
Plastics	-312	-310	-301	-293	-273	-295	-310	-323	-305	-302
Processed industrial supplies n.e.s.	-2 369	-2 528	-2 421	-2 504	-2 408	-2 434	-2 401	-2 334	-2 346	-2 649
Other merchandise goods(b)(d)(e)	-123	-25	-26	-35	-46	-97	-23	-69	-48	-20
Goods procured in ports by carriers(c)	-149	-147	-147	-146	-153	-153	-152	-154	-154	-154
Non-monetary gold(c)	-315	-308	-346	-333	-255	-230	-367	-331	-241	-294

(a) For sign conventions, see paragraph 15 of the Explanatory Notes.

(b) From July 2008, commodities subject to a 'no commodity details' or 'no value details' restriction are included in Civil aircraft and confidentialised items. For earlier periods, commodities subject to a 'no commodity details' or 'no value details' restriction are included in Other merchandise goods.

(c) This component is not seasonally adjusted.

(d) In using these seasonally adjusted series, care should be exercised because of the difficulties associated with reliably estimating the seasonal pattern.

(e) From July 1981, this component is not seasonally adjusted.

GOODS CREDITS(a), Trend Estimates

	Mar 2014	Apr 2014	May 2014	Jun 2014	Jul 2014	Aug 2014	Sep 2014	Oct 2014	Nov 2014	Dec 2014
	\$m	\$m	\$m	\$m	\$m	\$m	\$m	\$m	\$m	\$m
Total goods credits	23 318	22 706	22 071	21 596	21 406	21 457	21 603	21 755	21 909	22 037
General merchandise	22 164	21 591	20 964	20 467	20 233	20 234	20 351	20 499	20 662	20 810
<i>Rural goods</i>	3 450	3 382	3 315	3 266	3 251	3 256	3 274	3 303	3 346	3 389
Meat and meat preparations	879	881	886	904	938	980	1 022	1 059	1 091	1 113
Cereal grains and cereal preparations	843	803	752	706	676	656	649	653	665	684
Wool and sheepskins	220	214	215	221	231	240	246	250	254	256
Other rural(b)	1 508	1 484	1 462	1 435	1 407	1 380	1 357	1 341	1 336	1 336
<i>Non-rural goods</i>	18 714	18 209	17 649	17 200	16 982	16 978	17 077	17 195	17 316	17 421
Metal ores and minerals	8 190	7 818	7 446	7 148	6 970	6 904	6 891	6 889	6 895	6 911
Coal, coke and briquettes	3 352	3 263	3 166	3 084	3 045	3 051	3 077	3 101	3 123	3 143
Other mineral fuels	2 689	2 656	2 577	2 509	2 481	2 491	2 517	2 546	2 573	2 582
Metals (excl. non-monetary gold)	944	934	919	907	910	928	962	1 006	1 053	1 092
Machinery	779	778	773	767	769	779	794	814	833	853
Transport equipment	421	423	430	438	443	440	432	424	416	414
Other manufactures	1 393	1 382	1 372	1 366	1 365	1 367	1 370	1 373	1 376	1 379
Other non-rural (incl. sugar and beverages)(b)	796	804	815	831	851	870	885	895	899	899
Goods procured in ports by carriers	150	150	150	149	149	149	148	148	148	148
Net exports of goods under merchanting	5	7	11	18	25	31	36	40	43	45
Non-monetary gold	1 150	1 108	1 096	1 111	1 149	1 192	1 216	1 216	1 204	1 181

(a) Caution should be used when interpreting recent trend estimates as they may be affected by unusual economic factors. For more details on trend estimates, please see paragraph 19 of the Explanatory Notes.

(b) For all time periods, estimates for sugar, sugar preparations and honey are included in Other non-rural.

GOODS DEBITS(a)(b), Trend Estimates

	Mar 2014	Apr 2014	May 2014	Jun 2014	Jul 2014	Aug 2014	Sep 2014	Oct 2014	Nov 2014	Dec 2014
	\$m	\$m	\$m	\$m	\$m	\$m	\$m	\$m	\$m	\$m
Total goods debits	-22 298	-22 301	-22 233	-22 157	-22 114	-22 092	-22 079	-22 081	-22 077	-22 069
General merchandise	-21 977	-21 983	-21 920	-21 851	-21 814	-21 795	-21 784	-21 788	-21 786	-21 778
Consumption goods	-6 885	-6 880	-6 859	-6 840	-6 843	-6 862	-6 890	-6 923	-6 957	-6 987
Food and beverages, mainly for consumption	-1 027	-1 033	-1 032	-1 027	-1 023	-1 022	-1 025	-1 032	-1 039	-1 050
Household electrical items	-445	-444	-443	-440	-437	-433	-429	-425	-424	-424
Non-industrial transport equipment	-1 540	-1 547	-1 560	-1 574	-1 590	-1 609	-1 631	-1 652	-1 670	-1 686
Textiles, clothing and footwear	-1 170	-1 170	-1 161	-1 150	-1 140	-1 135	-1 132	-1 131	-1 130	-1 127
Toys, books and leisure goods	-477	-476	-473	-472	-473	-475	-477	-479	-480	-481
Consumption goods n.e.s.	-2 226	-2 209	-2 189	-2 177	-2 180	-2 188	-2 196	-2 205	-2 213	-2 219
Capital goods	-5 160	-5 164	-5 149	-5 150	-5 185	-5 248	-5 331	-5 417	-5 490	-5 547
Machinery and industrial equipment	-1 755	-1 758	-1 756	-1 754	-1 753	-1 755	-1 752	-1 749	-1 744	-1 743
ADP equipment	-708	-684	-661	-651	-661	-686	-721	-757	-790	-818
Telecommunications equipment	-709	-713	-711	-710	-718	-741	-778	-821	-861	-896
Civil aircraft and confidentialised items(c)	-518	-524	-550	-590	-627	-640	-628	-600	-566	-537
Industrial transport equipment n.e.s.	-647	-639	-628	-620	-619	-626	-639	-655	-671	-684
Capital goods n.e.s.	-823	-846	-843	-826	-807	-801	-813	-836	-858	-870
Intermediate and other merchandise goods	-9 932	-9 939	-9 912	-9 860	-9 787	-9 685	-9 563	-9 447	-9 339	-9 243
Food and beverages, mainly for industry	-122	-126	-128	-130	-130	-128	-127	-127	-127	-128
Primary industrial supplies n.e.s.	-144	-143	-138	-134	-132	-132	-133	-130	-125	-121
Fuels and lubricants	-3 563	-3 555	-3 551	-3 542	-3 508	-3 428	-3 312	-3 181	-3 048	-2 926
Parts for transport equipment	-877	-883	-883	-882	-879	-873	-864	-855	-847	-838
Parts for ADP equipment	-57	-56	-55	-53	-52	-53	-54	-56	-59	-61
Other parts for capital goods	-1 246	-1 219	-1 191	-1 173	-1 171	-1 178	-1 190	-1 205	-1 220	-1 235
Organic and inorganic chemicals	-326	-335	-338	-333	-323	-314	-310	-311	-316	-323
Paper and paperboard	-200	-201	-201	-199	-196	-194	-191	-190	-189	-188
Textile yarn and fabrics	-107	-106	-105	-104	-105	-106	-108	-109	-111	-112
Iron and steel	-388	-391	-384	-374	-367	-363	-361	-357	-351	-345
Plastics	-312	-305	-298	-294	-293	-297	-302	-306	-310	-312
Processed industrial supplies n.e.s.	-2 420	-2 444	-2 457	-2 451	-2 432	-2 412	-2 404	-2 413	-2 435	-2 460
Other merchandise goods(c)	-22	-27	-34	-43	-50	-54	-55	-52	-47	-40
Goods procured in ports by carriers	-148	-148	-148	-149	-150	-152	-153	-154	-154	-155
Non-monetary gold	-321	-318	-313	-306	-300	-296	-295	-294	-292	-291

(a) For sign conventions, see paragraph 15 of the Explanatory Notes.

(b) Caution should be used when interpreting recent trend estimates as they may be affected by unusual economic factors. For more details on trend estimates, please see paragraph 19 of the Explanatory Notes.

(c) From July 2008, commodities subject to a 'no commodity details' or 'no value details' restriction are included in Civil aircraft and confidentialised items. For earlier periods, commodities subject to a 'no commodity details' or 'no value details' restriction are included in Other merchandise goods.

							6 MONTHS ENDED		Change
							DECEMBER		
	2011-12	2012-13	2013-14	Oct 2014	Nov 2014	Dec 2014	2013	2014	
	\$m	\$m	\$m	\$m	\$m	\$m	\$m	%	
Services credits	51 565	53 487	57 250	5 167	5 033	4 954	28 367	30 295	6.8
Manufacturing services on physical inputs owned by others	19	1	28	—	—	1	13	3	-76.9
Maintenance and repair services n.i.e.	46	57	88	3	4	4	57	27	-52.6
Transport	6 335	6 082	6 465	533	537	566	3 230	3 295	2.0
Passenger(c)	2 622	2 374	2 390	188	192	220	1 166	1 139	-2.3
Freight	374	346	288	19	19	20	152	120	-21.1
Other	2 278	2 243	2 515	213	213	213	1 274	1 262	-0.9
Postal and courier services(d)	1 061	1 119	1 272	113	113	113	638	774	21.3
Travel	30 687	31 370	33 709	3 121	2 982	2 873	16 609	17 954	8.1
Other services	14 478	15 977	16 960	1 510	1 510	1 510	8 458	9 016	6.6
Services debits	-62 202	-67 581	-71 219	-6 190	-5 695	-6 153	-37 134	-36 284	2.3
Manufacturing services on physical inputs owned by others	—	—	—	—	—	—	—	—	—
Maintenance and repair services n.i.e.	-380	-607	-789	-32	-16	-26	-418	-171	59.1
Transport	-16 118	-16 858	-17 030	-1 443	-1 395	-1 461	-8 994	-8 523	5.2
Passenger(c)	-6 688	-7 070	-6 328	-514	-488	-544	-3 398	-3 147	7.4
Freight	-8 945	-9 144	-9 700	-870	-848	-857	-4 990	-4 990	—
Other	-368	-555	-892	-53	-53	-53	-544	-314	42.3
Postal and courier services(d)	-117	-89	-110	-6	-6	-7	-62	-72	-16.1
Travel	-26 742	-28 025	-29 860	-2 624	-2 193	-2 576	-15 842	-15 452	2.5
Other services	-18 962	-22 091	-23 540	-2 091	-2 091	-2 090	-11 880	-12 138	-2.2
Memorandum items:									
Tourism related service credits(e)	33 309	33 744	36 099	3 309	3 174	3 093	17 775	19 093	7.4
Tourism related service debits(e)	-33 430	-35 095	-36 188	-3 138	-2 681	-3 120	-19 240	-18 599	3.3

— nil or rounded to zero (including null cells)

(a) For sign conventions, see paragraph 15 of the Explanatory Notes.

(b) For more detailed trade in services components, see table 11.

(c) Passenger services includes agency fees and commissions for air transport.

(d) Postal and courier services includes indirect commissions for sea transport.

(e) For a more detailed explanation of tourism related services, see paragraph 29 of the Explanatory Notes.

	Mar 2014	Apr 2014	May 2014	Jun 2014	Jul 2014	Aug 2014	Sep 2014	Oct 2014	Nov 2014	Dec 2014
	\$m	\$m	\$m	\$m	\$m	\$m	\$m	\$m	\$m	\$m
SEASONALLY ADJUSTED										
Services credits	4 868	4 826	4 881	4 894	5 029	5 045	5 066	4 969	4 988	5 019
Manufacturing services on physical inputs owned by others(b)	3	2	2	2	2	—	—	—	—	1
Maintenance and repair services n.i.e.(b)	7	5	4	7	5	5	6	3	4	4
Transport	549	551	555	536	548	547	539	537	542	543
Passenger(c)	199	209	221	205	200	197	190	189	190	187
Freight(d)	22	23	22	21	20	20	21	19	19	20
Other	211	214	210	211	203	204	204	207	209	209
Postal and courier services(e)	118	104	102	99	124	126	124	122	125	127
Travel	2 864	2 857	2 908	2 942	2 951	2 971	2 977	2 982	2 976	2 998
Other services	1 445	1 411	1 412	1 408	1 523	1 523	1 543	1 447	1 466	1 473
Services debits	-5 854	-5 965	-5 852	-5 832	-5 820	-5 846	-5 805	-5 786	-5 808	-5 833
Manufacturing services on physical inputs owned by others(b)	—	—	—	—	—	—	—	—	—	—
Maintenance and repair services n.i.e.(b)	-110	-39	-41	-55	-22	-52	-23	-32	-16	-26
Transport	-1 412	-1 363	-1 373	-1 346	-1 365	-1 361	-1 360	-1 344	-1 393	-1 385
Passenger(c)	-520	-504	-498	-505	-523	-521	-499	-493	-501	-495
Freight	-812	-806	-822	-786	-781	-779	-798	-788	-829	-825
Other(b)	-70	-45	-45	-46	-51	-51	-53	-53	-53	-53
Postal and courier services(e)(d)	-10	-7	-7	-8	-10	-10	-10	-10	-10	-12
Travel	-2 323	-2 558	-2 440	-2 442	-2 465	-2 470	-2 438	-2 444	-2 441	-2 435
Other services(d)	-2 009	-2 006	-1 999	-1 989	-1 968	-1 963	-1 983	-1 966	-1 959	-1 987
Memorandum items:										
Tourism related service credits(f)	3 063	3 066	3 128	3 147	3 151	3 168	3 167	3 171	3 166	3 186
Tourism related service debits(f)	-2 843	-3 062	-2 938	-2 947	-2 988	-2 990	-2 938	-2 937	-2 942	-2 930

TREND ESTIMATES (g)

Services credits	4 853	4 868	4 898	4 939	4 979	5 006	5 019	5 021	5 018	5 013
Manufacturing services on physical inputs owned by others	3	3	2	2	1	1	—	—	—	—
Maintenance and repair services n.i.e.	5	5	5	6	5	5	5	4	4	4
Transport	550	550	548	547	545	543	542	541	541	541
Passenger(c)	205	207	208	206	202	197	193	190	187	187
Freight	23	22	22	22	21	21	20	20	20	19
Other	212	211	210	208	207	206	206	206	207	208
Postal and courier services(e)	111	108	108	111	115	119	123	125	126	127
Travel	2 870	2 884	2 904	2 927	2 949	2 964	2 975	2 982	2 988	2 992
Other services	1 425	1 427	1 438	1 458	1 478	1 493	1 497	1 493	1 486	1 476
Services debits	-5 885	-5 867	-5 853	-5 842	-5 833	-5 823	-5 813	-5 809	-5 809	-5 810
Manufacturing services on physical inputs owned by others	—	—	—	—	—	—	—	—	—	—
Maintenance and repair services n.i.e.	-46	-41	-39	-39	-38	-36	-32	-28	-24	-21
Transport	-1 381	-1 373	-1 365	-1 359	-1 357	-1 359	-1 362	-1 367	-1 373	-1 379
Passenger(c)	-507	-505	-507	-509	-511	-509	-506	-502	-499	-495
Freight	-820	-814	-804	-794	-788	-789	-794	-802	-810	-820
Other	-45	-45	-46	-48	-49	-51	-52	-53	-53	-54
Postal and courier services(e)	-9	-9	-9	-9	-9	-10	-10	-10	-11	-11
Travel	-2 457	-2 452	-2 452	-2 456	-2 458	-2 455	-2 449	-2 444	-2 442	-2 438
Other services	-2 001	-2 000	-1 996	-1 988	-1 979	-1 973	-1 970	-1 969	-1 970	-1 972
Memorandum items:										
Tourism related service credits(f)	3 075	3 091	3 112	3 134	3 151	3 162	3 168	3 172	3 175	3 178
Tourism related service debits(f)	-2 964	-2 957	-2 959	-2 966	-2 969	-2 965	-2 955	-2 947	-2 941	-2 933

— nil or rounded to zero (including null cells)

(a) For sign conventions, see paragraph 15 of the Explanatory Notes.

(b) This component is not seasonally adjusted.

(c) Passenger services includes agency fees and commissions for air transport.

(d) In using these seasonally adjusted series, care should be exercised because of the difficulties associated with reliably estimating the seasonal pattern.

(e) Postal and courier services includes indirect commissions for sea transport.

(f) For a more detailed explanation of tourism related services, see paragraph 29 of the Explanatory Notes.

(g) Caution should be used when interpreting recent trend estimates as they may be affected by unusual economic factors. For more details on trend estimates, please see paragraph 19 of the Explanatory Notes.

	CREDITS				DEBITS			
	Mar Qtr	Jun Qtr	Sep Qtr	Dec Qtr	Mar Qtr	Jun Qtr	Sep Qtr	Dec Qtr
	2014	2014	2014	2014	2014	2014	2014	2014
	\$m	\$m	\$m	\$m	\$m	\$m	\$m	\$m
Services	14 644	14 239	15 141	15 154	-16 896	-17 189	-18 246	-18 038
Manufacturing services on physical inputs owned by others	9	6	2	1	—	—	—	—
Maintenance and repair services n.i.e.	15	16	16	11	-236	-135	-97	-74
Transport	1 715	1 520	1 659	1 636	-4 100	-3 936	-4 224	-4 299
Passenger(b)	679	545	539	600	-1 473	-1 457	-1 601	-1 546
Freight	65	71	62	58	-2 380	-2 330	-2 415	-2 575
Other	610	631	623	639	-212	-136	-155	-159
Postal and courier services(c)	361	273	435	339	-35	-13	-53	-19
Travel	8 676	8 424	8 978	8 976	-6 800	-7 218	-8 059	-7 393
Business	1 051	1 015	1 042	1 010	-946	-819	-839	-810
Personal	7 625	7 409	7 936	7 966	-5 854	-6 399	-7 220	-6 583
Education-related	3 762	4 297	4 629	4 000	-257	-249	-426	-283
Other(d)	3 863	3 112	3 307	3 966	-5 597	-6 150	-6 794	-6 300
Construction	36	48	35	24	—	—	—	—
Insurance and pension services	119	148	123	126	-193	-202	-202	-205
Financial services	699	677	994	792	-472	-480	-546	-564
Charges for the use of intellectual property n.i.e.	182	216	261	242	-1 019	-1 141	-1 109	-1 094
Telecommunications, computer and information services	446	508	507	549	-696	-748	-698	-744
Telecommunication services	60	68	77	91	-71	-76	-79	-76
Computer and information services	386	440	430	458	-625	-672	-619	-668
Computer services	320	363	359	381	-485	-547	-510	-525
Information services	20	25	28	33	-41	-47	-47	-72
Other services	46	52	43	44	-99	-78	-62	-71
Other business services	2 238	2 203	2 072	2 308	-2 705	-2 655	-2 588	-2 840
Research and development services	203	165	149	179	-82	-91	-43	-68
Professional and management consulting services	1 200	1 158	1 175	1 311	-1 176	-1 209	-1 118	-1 302
Legal, accounting, management consulting, public relations and other professional services	1 005	979	1 016	1 118	-1 121	-1 111	-1 049	-1 222
Advertising, market research and public opinion polling	195	179	159	193	-55	-98	-69	-80
Technical, trade-related and other business services	835	880	748	818	-1 447	-1 355	-1 427	-1 470
Architectural, engineering and other technical services	388	441	337	377	-782	-752	-692	-771
Waste treatment and de-pollution, agricultural and mining services	54	55	43	45	-55	-52	-102	-103
Operational leasing services	68	74	70	61	-143	-119	-87	-92
Trade-related commission services	168	182	159	175	-93	-77	-90	-89
Other business services n.i.e.	157	128	139	160	-374	-355	-456	-415
Personal, cultural and recreational services	263	227	247	242	-425	-420	-466	-566
Audiovisual and related services	71	65	58	65	-311	-368	-408	-478
Other personal, cultural and recreational services	192	162	189	177	-114	-52	-58	-88
Government goods and services n.i.e.	246	246	247	247	-250	-254	-257	-259
Memorandum items:								
Gross insurance premiums receivable / payable	335	402	354	356	-393	-392	-396	-404
Gross insurance claims payable / receivable	-240	-227	-229	-225	249	249	262	274
Tourism related services(e)	9 355	8 969	9 517	9 576	-8 273	-8 675	-9 660	-8 939

— nil or rounded to zero (including null cells)

(a) For sign conventions, see paragraph 15 of the Explanatory Notes.

(b) Passenger services includes agency fees and commissions for air transport.

(c) Postal and courier services includes indirect commissions for sea transport.

(d) Other personal travel includes health-related travel.

(e) For a more detailed explanation of tourism related services, see paragraph 29 of the Explanatory Notes.

	Oct 2014	Nov 2014	Dec 2014	Percentage of total merchandise exports (b)	6 MONTHS ENDED	
					DECEMBER	
					2013	2014
	\$m	\$m	\$m	%	\$m	\$m
MAJOR COMMODITIES (c)						
011 Meat of bovine animals	810	837	859	3.5	3 204	4 541
012 Meat and edible meat offal, fresh, chilled or frozen (excl. meat of bovine animals)	382	359	375	1.5	1 619	2 005
041 Wheat and meslin	258	283	429	1.8	2 343	2 182
281 Iron ore and concentrates	4 857	4 435	5 430	22.3	38 288	30 254
283 Copper ores and concentrates	573	387	650	2.7	2 654	2 885
285 Aluminium ores and concentrates	539	604	696	2.9	3 081	3 324
287 Ores and concentrates of base metals, n.e.s.	444	532	520	2.1	2 348	2 616
321 Coal, not agglomerated	3 112	3 310	3 664	15.0	20 979	19 178
333 Crude petroleum oils	913	835	825	3.4	5 111	5 363
343 Natural gas	1 541	1 618	1 591	6.5	7 785	9 291
542 Medicaments	195	189	173	0.7	1 610	1 163
682 Copper	346	307	434	1.8	1 800	1 981
684 Aluminium	385	309	455	1.9	1 918	2 063
971 Gold, non-monetary	1 285	761	1 196	4.9	6 583	6 781
SECTION AND DIVISION OF THE SITC						
0 Food and live animals						
00 Live animals (excl. fish, crustaceans, molluscs and aquatic invertebrates)	115	126	201	0.8	587	836
01 Meat and meat preparations	1 202	1 203	1 241	5.1	4 862	6 592
02 Dairy products and birds' eggs	198	209	261	1.1	1 258	1 174
03 Fish (not marine mammals), crustaceans, molluscs and aquatic invertebrates, and preparations thereof	64	85	137	0.6	537	607
04 Cereals and cereal preparations	416	488	744	3.1	3 869	3 533
05 Vegetables and fruit	149	161	175	0.7	1 127	1 068
06 Sugars, sugar preparations and honey	35	14	24	0.1	158	133
07 Coffee, tea, cocoa, spices, and manufactures thereof	24	25	31	0.1	156	155
08 Feeding stuff for animals (excl. unmilled cereals)	91	87	99	0.4	569	535
09 Miscellaneous edible products and preparations	97	104	115	0.5	556	592
<i>Total Food and live animals</i>	2 392	2 502	3 028	12.4	13 680	15 223
1 Beverages and tobacco						
11 Beverages	194	169	208	0.9	1 079	1 099
12 Tobacco and tobacco manufactures	5	4	8	—	34	36
<i>Total Beverages and tobacco</i>	200	174	216	0.9	1 112	1 135
2 Crude materials, inedible, except fuels						
21 Hides, skins and furskins, raw	102	93	102	0.4	576	541
22 Oil-seeds and oleaginous fruits	26	98	186	0.8	909	398
23 Crude rubber (incl. synthetic and reclaimed)	1	1	1	—	9	7
24 Cork and wood	115	97	135	0.6	544	631
25 Pulp and waste paper	21	20	26	0.1	126	121
26 Textile fibres and their wastes (not manufactured into yarn or fabric)	355	317	310	1.3	2 891	2 505
27 Crude fertilizers (excl. those of Division 56) and crude minerals (excl. coal, petroleum and precious stones)	59	41	50	0.2	160	252
28 Metalliferous ores and metal scrap	6 826	6 484	7 970	32.7	49 367	42 125
29 Crude animal and vegetable materials, n.e.s.	30	29	36	0.1	154	181
<i>Total Crude materials, inedible, except fuels</i>	7 535	7 181	8 815	36.2	54 737	46 762
3 Mineral fuels, lubricants and related materials						
32 Coal, coke and briquettes	3 132	3 323	3 683	15.1	21 054	19 264
33 Petroleum, petroleum products and related materials	1 103	1 105	1 030	4.2	6 537	6 785
34 Gas, natural and manufactured	1 625	1 716	1 619	6.6	8 379	9 790
<i>Total Mineral fuels, lubricants and related materials</i>	5 860	6 145	6 332	26.0	35 970	35 839

— nil or rounded to zero (including null cells)

(a) Some SITC sections and divisions exclude commodities subject to a confidentiality restriction. These are included in Division 98. For more information see paragraphs 26 and 27 of the Explanatory Notes.

(b) Percent of total merchandise is calculated for the most recent month.

(c) The 'Major commodities' section lists commodities at the SITC Rev 4 3-digit level which are the most significant (by value) or are of particular interest. Abbreviated descriptors have been used. The list of 'Major commodities' is reviewed annually.

	Oct 2014	Nov 2014	Dec 2014	Percentage of total merchandise exports(b)	6 MONTHS ENDED DECEMBER	
					2013	2014
					\$m	\$m
SECTION AND DIVISION OF THE SITC						
4	Animal and vegetable oils, fats and waxes					
41	40	26	48	0.2	206	216
42	16	10	26	0.1	111	102
43	Fats and oils (processed), waxes and inedible mixtures or preparations, of animal or vegetable origin, n.e.s.					
	7	—	1	—	12	10
	<i>Total Animal and vegetable oils, fats and waxes</i>					
	63	37	75	0.3	329	329
5	Chemicals and related products, n.e.s.					
51	13	15	14	0.1	85	92
52	61	89	73	0.3	426	371
53	64	65	74	0.3	361	399
54	237	228	209	0.9	1 873	1 434
55	Essential oils and resinoids and perfume materials, toilet, polishing and cleansing preparations					
	67	61	66	0.3	371	376
56	42	14	15	0.1	105	186
57	27	30	31	0.1	147	175
58	30	28	24	0.1	172	167
59	93	83	84	0.3	513	516
	<i>Total Chemicals and related products, n.e.s.</i>					
	634	614	590	2.4	4 054	3 715
6	Manufactured goods classified chiefly by material					
61	24	20	22	0.1	123	128
62	17	17	23	0.1	108	111
63	6	6	9	—	39	48
64	84	65	73	0.3	468	469
65	20	21	24	0.1	122	126
66	78	77	85	0.3	540	486
67	49	48	99	0.4	302	358
68	1 020	851	1 172	4.8	5 150	5 495
69	89	101	82	0.3	560	577
	<i>Total Manufactured goods classified chiefly by material</i>					
	1 387	1 205	1 588	6.5	7 412	7 797
7	Machinery and transport equipment					
71	97	85	95	0.4	459	515
72	160	186	201	0.8	993	1 057
73	17	16	25	0.1	89	114
74	General industrial machinery and equipment, n.e.s. and machine parts, n.e.s.					
	175	184	198	0.8	1 004	1 055
75	123	148	164	0.7	684	774
76	Telecommunications and sound recording and reproducing apparatus and equipment					
	115	124	124	0.5	639	726
77	Electrical machinery, apparatus and appliances, parts (incl. non electrical counterparts of electrical domestic equip)					
	143	139	147	0.6	790	832
78	264	261	286	1.2	1 762	1 585
79	150	142	222	0.9	992	1 212
	<i>Total Machinery and transport equipment</i>					
	1 242	1 285	1 461	6.0	7 411	7 870

— nil or rounded to zero (including null cells)

(b) Percent of total merchandise is calculated for the most recent month.

(a) Some SITC sections and divisions exclude commodities subject to a confidentiality restriction. These are included in Division 98. For more information see paragraphs 26 and 27 of the Explanatory Notes.

	Oct	Nov	Dec	Percentage	6 MONTHS ENDED	
	2014	2014	2014	of total	DECEMBER	
	\$m	\$m	\$m	merchandise	2013	2014
				exports(b)	\$m	\$m
				%		
SECTION AND DIVISION OF THE SITC						
8	Miscellaneous manufactured articles					
81	Prefabricated buildings and sanitary, plumbing, heating and lighting fixtures and fittings, n.e.s.					
	7	19	12	—	88	75
82	Furniture and parts thereof; bedding, mattresses, mattress supports, cushions and similar stuffed furnishings					
	9	8	11	—	49	56
83	Travel goods, handbags and similar containers					
	4	4	4	—	22	23
84	Articles of apparel and clothing accessories					
	23	26	19	0.1	117	132
85	Footwear					
	7	5	7	—	31	37
87	Professional, scientific and controlling instruments and apparatus, n.e.s.					
	203	212	212	0.9	1 022	1 174
88	Photographic apparatus, equipment and supplies and optical goods, n.e.s., watches and clocks					
	26	29	26	0.1	138	152
89	Miscellaneous manufactured articles, n.e.s.					
	217	246	196	0.8	1 328	1 269
	<i>Total Miscellaneous manufactured articles</i>					
	495	549	489	2.0	2 794	2 918
9	Commodities and transactions not classified elsewhere in the SITC					
93	Special transactions and commodities not classified according to kind					
	93	95	93	0.4	721	565
95	Gold coin whether or not legal tender, and other coin being legal tender					
	66	70	63	0.3	555	407
96	Coin (excl. gold coin) not being legal tender					
	—	—	1	—	—	1
97	Gold, non-monetary (excl. gold ores and concentrates)					
	1 285	761	1 196	4.9	6 583	6 781
98	Combined confidential items excluding some of SITC 28099 (exports only) and some of SITC 51099 (imports only)					
	689	554	420	1.7	3 098	3 320
	<i>Total Commodities and transactions not classified elsewhere in the SITC</i>					
	2 133	1 480	1 772	7.3	10 957	11 075
	Total merchandise exports					
	21 940	21 171	24 367	100.0	138 457	132 663
	Balance of Payments Adjustments					
	125	24	-369	..	663	185
	Goods credits (exports) on a Balance of Payments Basis					
	22 065	21 195	23 998	..	139 120	132 848

.. not applicable
 — nil or rounded to zero (including null cells)

(a) Some SITC sections and divisions exclude commodities subject to a confidentiality restriction. These are included in Division 98. For more information see paragraphs 26 and 27 of the Explanatory Notes.
 (b) Percent of total merchandise is calculated for the most recent month.

	Oct 2014	Nov 2014	Dec 2014	Percentage of total merchandise imports(b)	6 MONTHS ENDED DECEMBER	
					2013	2014
					\$m	\$m
MAJOR COMMODITIES (c)						
333 Crude petroleum oils	1 371	1 295	1 395	6.5	10 759	9 462
334 Refined petroleum oils	1 886	1 456	1 420	6.7	9 556	9 035
542 Medicaments	630	593	499	2.3	3 854	3 674
741 Heating and cooling equipment and parts thereof, n.e.s.	324	610	261	1.2	1 846	2 213
743 Air Pumps, compressors or fans; hoods; centrifuges; filtering apparatus; parts	197	274	350	1.6	1 657	1 885
752 Automatic data processing machines	647	774	825	3.9	3 669	3 879
764 Telecommunications equipment	1 055	1 170	1 073	5.0	4 914	5 698
778 Electrical machinery and apparatus, n.e.s.	286	253	253	1.2	1 511	1 587
781 Motor cars for the transport of persons	1 535	1 650	1 651	7.7	9 576	9 314
782 Motor vehicles for the transport of goods	575	486	536	2.5	3 088	3 040
821 Furniture, bedding, mattresses and supports, and stuffed furnishings	360	365	348	1.6	1 852	2 041
874 Measuring, checking, analysing and controlling instruments and apparatus, n.e.s.	258	255	348	1.6	1 468	1 663
971 Gold, non-monetary	331	241	294	1.4	2 517	1 755

SECTION AND DIVISION OF THE SITC

0	Food and live animals					
00	Live animals other than fish, crustaceans, molluscs and aquatic invertebrates	6	6	12	0.1	45
01	Meat and meat preparations	67	68	67	0.3	294
02	Dairy products and birds' eggs	72	70	75	0.3	405
03	Fish (not marine mammals), crustaceans, molluscs and aquatic invertebrates, and preparations thereof	169	179	198	0.9	921
04	Cereals and cereal preparations	120	97	98	0.5	606
05	Vegetables and fruit	230	199	227	1.1	1 092
06	Sugars, sugar preparations and honey	41	35	46	0.2	229
07	Coffee, tea, cocoa, spices, and manufactures thereof	168	142	145	0.7	813
08	Feeding stuff for animals (excl. unmilled cereals)	79	44	135	0.6	423
09	Miscellaneous edible products and preparations	227	167	217	1.0	1 089
	<i>Total Food and live animals</i>	<i>1 179</i>	<i>1 007</i>	<i>1 220</i>	<i>5.7</i>	<i>5 916</i>
1	Beverages and tobacco					
11	Beverages	217	206	205	1.0	1 139
12	Tobacco and tobacco manufactures	54	56	68	0.3	309
	<i>Total Beverages and tobacco</i>	<i>271</i>	<i>262</i>	<i>273</i>	<i>1.3</i>	<i>1 448</i>
2	Crude materials, inedible, except fuels					
21	Hides, skins and furskins, raw	—	1	—	—	2
22	Oil-seeds and oleaginous fruits	10	8	10	—	35
23	Crude rubber (incl. synthetic and reclaimed)	11	8	9	—	54
24	Cork and wood	85	81	76	0.4	355
25	Pulp and waste paper	17	17	18	0.1	102
26	Textile fibres and their wastes (not manufactured into yarn or fabric)	10	9	5	—	52
27	Crude fertilizers (excl. those of Division 56) and crude minerals (excl. coal, petroleum and precious stones)	41	27	30	0.1	134
28	Metalliferous ores and metal scrap	107	34	35	0.2	272
29	Crude animal and vegetable materials, n.e.s.	43	38	45	0.2	225
	<i>Total Crude materials, inedible, except fuels</i>	<i>323</i>	<i>223</i>	<i>228</i>	<i>1.1</i>	<i>1 230</i>
3	Mineral fuels, lubricants and related materials					
32	Coal, coke and briquettes	10	4	4	—	21
33	Petroleum, petroleum products and related materials	3 318	2 809	2 882	13.5	20 771
34	Gas, natural and manufactured	36	2	28	0.1	1 374
	<i>Total Mineral fuels, lubricants and related materials</i>	<i>3 364</i>	<i>2 816</i>	<i>2 914</i>	<i>13.7</i>	<i>22 166</i>

— nil or rounded to zero (including null cells)

(a) Some SITC sections and divisions exclude commodities subject to a confidentiality restriction. These are included in Division 98. For more information see paragraphs 26 and 28 of the Explanatory Notes.

(b) Percent of total merchandise is calculated for the most recent month.

(c) The 'Major commodities' section lists commodities at the SITC Rev 4 3-digit level which are the most significant (by value) or are of particular interest. Abbreviated descriptors have been used. The list of 'Major commodities' is reviewed annually.

	Oct 2014	Nov 2014	Dec 2014	Percentage of total merchandise imports(b)	6 MONTHS ENDED DECEMBER	
					2013	2014
					\$m	\$m
SECTION AND DIVISION OF THE SITC						
4	Animal and vegetable oils, fats and waxes					
41	4	2	2	—	34	32
42	53	54	39	0.2	242	269
43	Fats and oils (processed), waxes and inedible mixtures or preparations, of animal or vegetable n.e.s.					
	3	5	4	—	21	23
	<i>Total Animal and vegetable oils, fats and waxes</i>					
	60	62	44	0.2	297	324
5	Chemicals and related products, n.e.s.					
51	198	234	186	0.9	1 208	1 154
52	144	128	128	0.6	713	766
53	64	58	55	0.3	347	361
54	831	782	706	3.3	5 056	4 917
55	Essential oils and resinoids and perfume materials; toilet, polishing and cleansing preparations					
	237	202	197	0.9	1 265	1 293
56	49	86	173	0.8	586	666
57	199	157	137	0.6	944	958
58	168	154	148	0.7	883	913
59	263	200	237	1.1	1 328	1 395
	<i>Total Chemicals and related products, n.e.s.</i>					
	2 153	2 003	1 967	9.2	12 328	12 424
6	Manufactured goods classified chiefly by material					
61	16	15	13	0.1	77	90
62	301	256	263	1.2	1 797	1 690
63	100	96	87	0.4	467	541
64	280	239	222	1.0	1 454	1 505
65	295	273	243	1.1	1 509	1 582
66	318	279	255	1.2	1 504	1 676
67	450	328	271	1.3	1 822	2 175
68	217	204	170	0.8	1 262	1 320
69	674	676	792	3.7	4 308	4 160
	<i>Total Manufactured goods classified chiefly by material</i>					
	2 650	2 366	2 316	10.9	14 200	14 739
7	Machinery and transport equipment					
71	372	364	343	1.6	2 514	2 408
72	643	593	600	2.8	3 906	3 679
73	50	41	55	0.3	288	276
74	General industrial machinery and equipment, n.e.s., and machine parts, n.e.s.					
	1 216	1 515	1 328	6.2	7 742	8 184
75	857	973	1 053	4.9	4 981	5 180
76	Telecommunications and sound recording and reproducing apparatus and equipment					
	1 321	1 410	1 289	6.0	6 327	7 128
77	Electrical machinery, apparatus, appliances, parts (incl. non-elec. counterparts of electrical domestic equip)					
	1 114	1 056	1 033	4.8	6 014	6 314
78	2 573	2 556	2 593	12.2	15 346	14 916
79	185	254	250	1.2	1 400	1 226
	<i>Total Machinery and transport equipment</i>					
	8 331	8 762	8 544	40.1	48 519	49 310

— nil or rounded to zero (including null cells)

(b) Percent of total merchandise is calculated for the most recent month.

(a) Some SITC sections and divisions exclude commodities subject to a confidentiality restriction. These are included in Division 98. For more information see paragraphs 26 and 28 of the Explanatory Notes.

	Oct	Nov	Dec	Percentage	6 MONTHS ENDED	
	2014	2014	2014	of total	DECEMBER	
				merchandise	2013	2014
	\$m	\$m	\$m	imports(b)	\$m	\$m
				%		
SECTION AND DIVISION OF THE SITC						
8	Miscellaneous manufactured articles					
81	Prefabricated buildings; sanitary, plumbing, heating and lighting fixtures and fittings, n.e.s.	153	135	116	0.5	773 807
82	Furniture, parts thereof; bedding, mattresses, mattress supports, cushions and similar stuffed furnishings	360	365	348	1.6	1 852 2 041
83	Travel goods, handbags and similar containers	131	125	126	0.6	633 692
84	Articles of apparel and clothing accessories	646	519	463	2.2	3 490 3 564
85	Footwear	153	138	163	0.8	906 958
87	Professional, scientific and controlling instruments and apparatus, n.e.s.	507	496	587	2.8	2 801 3 117
88	Photographic apparatus, equipment and supplies and optical goods, n.e.s., watches and clocks	173	166	169	0.8	865 940
89	Miscellaneous manufactured articles, n.e.s.	1 247	1 128	988	4.6	6 223 6 535
	<i>Total Miscellaneous manufactured articles</i>	<i>3 370</i>	<i>3 073</i>	<i>2 961</i>	<i>13.9</i>	<i>17 543 18 656</i>
9	Commodities and transactions not classified elsewhere in the SITC					
93	Special transactions and commodities not classified according to kind	—	1	—	—	6 5
95	Gold coin whether or not legal tender, and other coin being legal tender	5	6	4	—	20 27
96	Coin (excl. gold coin) not being legal tender	1	—	—	—	4 2
97	Gold, non-monetary (excl. gold ores and concentrates)	331	241	294	1.4	2 517 1 755
98	Combined confidential items excluding some of SITC 28099 (exports only) and some of SITC 51099 (imports only)	352	570	548	2.6	2 700 3 693
	<i>Total Commodities and transactions not classified elsewhere in the SITC</i>	<i>689</i>	<i>819</i>	<i>846</i>	<i>4.0</i>	<i>5 246 5 482</i>
	Total merchandise imports	22 390	21 392	21 314	100.0	128 894 129 629
	Balance of Payments Adjustments	1 510	1 467	993	. .	9 424 7 508
	Goods Debits (imports) on a Balance of Payments Basis	23 900	22 859	22 307	. .	138 318 137 137

. . not applicable
 — nil or rounded to zero (including null cells)

(a) Some SITC sections and divisions exclude commodities subject to a confidentiality restriction. These are included in Division 98. For more information see paragraphs 26 and 28 of the Explanatory Notes.

(b) Percent of total merchandise is calculated for the most recent month.

	EXPORTS (a)				IMPORTS (b)				BALANCE OF MERCHANDISE TRADE	
	2013-14	Dec	6 months ended	6 months ended	2013-14	Dec	6 months ended	6 months ended	2013-14	6 months ended
		2014	December	December		2014	December	December		December
	\$m	\$m	\$m	\$m	\$m	\$m	\$m	\$m	\$m	\$m
Belgium	1 087	48	442	405	1 741	120	860	865	-654	-460
Brazil	772	100	387	656	590	51	302	312	183	344
Canada	1 224	129	660	664	1 988	198	1 026	1 077	-764	-414
China (excluding SARs and Taiwan)	99 525	7 694	51 830	42 493	49 943	5 064	26 821	28 853	49 582	13 640
Denmark	101	8	48	60	1 203	99	685	548	-1 103	-488
Egypt(a)	446	38	183	216	34	2	12	16	412	199
Fiji	305	22	163	170	159	15	86	84	146	86
Finland	55	4	27	19	785	68	406	384	-730	-365
France	1 183	126	566	522	4 111	350	2 048	2 184	-2 928	-1 662
Germany	1 797	185	941	834	11 958	1 122	6 177	6 082	-10 162	-5 247
Hong Kong (SAR of China)	2 788	318	1 433	1 497	1 202	107	644	639	1 586	857
India	8 321	891	4 341	4 872	2 850	251	1 337	1 555	5 471	3 317
Indonesia	4 890	463	2 330	2 466	6 416	382	3 158	2 831	-1 526	-365
Iran	302	2	15	72	28	4	12	18	274	55
Iraq	329	43	95	50	—	—	—	—	329	49
Ireland	62	5	34	23	1 534	128	788	826	-1 471	-803
Israel	243	26	113	96	710	66	367	392	-467	-296
Italy	665	51	324	302	5 919	647	3 094	3 222	-5 255	-2 920
Japan	48 327	4 430	24 650	24 143	18 367	1 286	9 824	8 631	29 960	15 512
Korea, Republic of	20 460	1 865	10 149	9 554	11 264	930	5 499	6 008	9 196	3 546
Kuwait	568	82	321	372	333	—	234	—	235	372
Malaysia	5 361	746	2 489	3 153	11 101	838	5 354	5 431	-5 740	-2 279
Mexico	462	95	191	238	1 952	192	977	994	-1 491	-757
Netherlands	1 995	210	1 080	1 076	1 801	195	844	992	195	84
New Zealand	7 538	677	3 907	4 336	7 801	719	4 025	4 077	-263	259
Pakistan	400	32	162	182	210	16	98	99	190	82
Papua New Guinea	2 392	182	1 301	1 065	3 455	314	1 699	1 946	-1 063	-881
Philippines	1 466	133	746	891	1 053	55	477	600	413	292
Saudi Arabia	2 229	195	1 021	1 042	347	48	105	183	1 882	859
Singapore	7 368	719	3 235	4 312	12 976	877	6 258	5 897	-5 608	-1 585
South Africa	1 231	100	651	606	891	137	519	540	340	66
Spain	466	89	222	325	3 340	146	1 288	1 025	-2 874	-700
Sweden	290	20	149	134	2 118	129	1 061	980	-1 828	-847
Switzerland	830	30	468	183	2 937	211	1 553	1 430	-2 107	-1 247
Taiwan	7 164	611	3 652	3 394	4 028	331	2 047	2 431	3 136	963
Thailand	4 735	448	2 224	2 630	11 023	1 055	6 005	5 896	-6 288	-3 266
Turkey	709	125	498	284	730	67	362	387	-21	-103
United Arab Emirates	2 722	419	1 339	1 554	3 245	236	2 003	1 578	-523	-24
United Kingdom	3 588	302	1 805	1 891	6 301	513	3 295	3 076	-2 713	-1 184
United States of America	10 057	1 137	4 972	6 165	26 064	2 150	12 977	13 340	-16 007	-7 176
Viet Nam	2 722	314	1 142	1 466	4 515	345	2 191	2 623	-1 793	-1 157
Other Countries(b) (a)	15 744	1 252	8 149	8 251	24 647	1 849	12 375	11 575	-8 903	-3 324
Total	272 921	24 367	138 457	132 663	251 672	21 314	128 894	129 629	21 249	3 033
APEC	227 648	20 055	115 603	108 870	177 708	15 250	90 991	93 308	49 940	15 562
ASEAN	26 793	2 844	12 288	15 041	47 971	3 781	23 862	23 973	-21 177	-8 932
Developing Countries	183 710	16 143	92 821	86 124	140 496	12 204	71 922	74 409	43 215	11 715
Least Developed Countries	2 375	141	1 151	1 042	915	74	453	531	1 460	511
European Union(c)	12 024	1 157	5 968	6 004	44 705	3 853	22 443	22 272	-32 681	-16 268
OECD	102 160	9 642	51 760	51 789	118 999	9 792	60 098	59 474	-16 839	-7 685

— nil or rounded to zero (including null cells)

(a) Exports of Alumina to Bahrain, Egypt and Iceland are excluded from individual country totals and included in 'Other Countries' up to December 2012. From June 2013, exports data with confidentiality restrictions 'No commodity details' or 'No value details' are excluded from individual country totals and included in 'Other Countries'. See Explanatory Notes paragraphs 26 and 27 for more details.

(b) From September 2008 imports data with confidentiality restrictions 'No commodity details' or 'No value details' are excluded from individual country totals and included in 'Other Countries'. See Explanatory Notes paragraphs 26 and 28 for more details.

(c) The European Union includes 28 member countries for all periods.

	6 MONTHS ENDED			
	DECEMBER			
	2013-14	Dec 2014	2013	2014
	\$m	\$m	\$m	\$m
EXPORTS (a)(b)				
New South Wales	36 599	3 545	19 033	18 594
Victoria	23 963	2 215	11 840	11 817
Queensland	44 812	4 386	23 581	23 106
South Australia	12 352	1 047	6 067	5 639
Western Australia	130 427	10 919	65 286	60 119
Tasmania	2 753	253	1 391	1 229
Northern Territory	6 804	692	3 366	3 392
Australian Capital Territory	1	—	1	3
State not available for publication(b)	5 667	420	3 098	3 320
Re-exports	9 542	891	4 796	5 442
Total	272 921	24 367	138 457	132 663

IMPORTS (c)(d)				
New South Wales	89 286	8 180	46 406	48 520
Victoria	65 959	5 703	33 426	33 825
Queensland	41 860	2 876	21 692	19 408
South Australia	8 231	646	4 158	3 888
Western Australia	36 289	2 810	17 856	17 533
Tasmania	760	41	376	452
Northern Territory	3 483	510	2 277	2 302
Australian Capital Territory	7	—	4	9
State not available for publication(d)	5 797	548	2 700	3 693
Total	251 672	21 314	128 894	129 629

— nil or rounded to zero (including null cells)

(a) Exports by state of origin in which the final stage of production or manufacture occurs.

(b) Exports of Alumina to Bahrain, Egypt and Iceland are excluded from individual state totals and included in 'State not available for publication' up to December 2012. From June 2013, exports data with confidentiality restrictions 'No commodity details' or 'No value details' are excluded from individual state totals and included in 'State not available for publication'. See Explanatory Notes paragraphs 26 and 27 for more details.

(c) Imports by state of destination.

(d) From September 2008 imports data with confidentiality restrictions 'No commodity details' or 'No value details' are excluded from individual state totals and included in 'State not available for publication'. See Explanatory Notes paragraphs 26 and 28 for more details.

PERIOD AVERAGE EXCHANGE RATES(a), Per Australian dollar

<i>Period</i>	<i>United States dollar</i>	<i>UK pound sterling</i>	<i>Euro</i>	<i>Japanese yen</i>	<i>Special Drawing Right</i>	<i>Trade-weighted index of value of the A\$(b)</i>
FINANCIAL YEAR						
2011-12	1.0319	0.6516	0.7712	81.14	0.6629	76.0
2012-13	1.0268	0.6548	0.7941	89.89	0.6752	77.0
2013-14	0.9185	0.5651	0.6771	92.80	0.5987	70.5
MONTHS						
2013						
October	0.9516	0.5911	0.6977	93.13	0.6183	72.4
November	0.9331	0.5797	0.6915	93.25	0.6096	71.4
December	0.8989	0.5488	0.6562	92.96	0.5843	69.1
2014						
January	0.8865	0.5383	0.6508	92.22	0.5774	68.4
February	0.8966	0.5416	0.6566	91.54	0.5825	69.0
March	0.9071	0.5458	0.6561	92.81	0.5862	69.7
April	0.9314	0.5568	0.6747	95.52	0.6018	71.5
May	0.9309	0.5524	0.6773	94.78	0.6016	71.3
June	0.9368	0.5541	0.6890	95.58	0.6080	71.9
July	0.9392	0.5497	0.6933	95.51	0.6090	71.8
August	0.9304	0.5570	0.6988	95.81	0.6095	71.5
September	0.9062	0.5553	0.7017	97.15	0.6034	70.5
October	0.8784	0.5459	0.6921	94.77	0.5909	68.9
November	0.8650	0.5479	0.6932	100.43	0.5895	69.1
December	0.8256	0.5280	0.6694	98.48	0.5664	66.8

(a) These exchange rates and the trade-weighted index are derived using rates provided by the Reserve Bank of Australia in respect of each trading day.

(b) May 1970 = 100. The trade-weighted index is reweighted annually on 1 December.

	2011-12	2012-13	2013-14	Jun 2014	Jul 2014	Aug 2014	Sep 2014	Oct 2014	Nov 2014
	\$m	\$m	\$m	\$m	\$m	\$m	\$m	\$m	\$m
BALANCE									
On goods and services	—	—	34	16	-14	10	-52	-69	-18
CREDITS									
Total goods and services	—	—	14	14	-17	-7	-55	12	-222
<i>Total goods</i>	—	—	14	14	-17	-7	-55	12	-223
Rural goods	—	—	3	3	—	-1	2	1	-55
Non-rural goods	—	—	7	7	-18	-6	-57	11	-167
Net exports of goods under merchandising	—	—	3	3	—	—	—	—	—
Non-monetary gold	—	—	1	1	1	—	—	—	-1
<i>Total services</i>	—	—	—	—	—	—	—	—	1
DEBITS									
Total goods and services	—	—	20	2	3	17	3	-81	204
<i>Total goods</i>	—	—	58	2	3	16	3	-78	210
Consumption goods	—	—	—	—	1	—	1	-3	-20
Capital goods	—	—	59	3	3	8	3	6	38
Intermediate and other merchandise goods	—	—	-1	-1	-1	8	-1	-81	192
Non-monetary gold	—	—	—	—	—	—	—	—	—
<i>Total services</i>	—	—	-38	—	—	1	—	-3	-6

— nil or rounded to zero (including null cells)

(a) This table is presented consistent with BPM6 sign conventions. This means for the balance on goods and services a negative revision indicates a decrease in a surplus or an increase in a deficit. For debits a negative revision indicates an increase in debits while a positive revision indicates a decrease in debits.

EXPLANATORY NOTES

INTRODUCTION

1 This publication presents preliminary estimates of Australia's international trade in goods and services on a balance of payments basis (tables 1–11 and 17) and merchandise import and export statistics on an international merchandise trade basis (tables 12–15). In addition, table 16 Exchange rates and trade-weighted indexes (TWI) are derived by using exchange rates and indexes provided by the Reserve Bank of Australia (RBA). As of December 2011 the RBA has changed the methodology for compiling the TWI to include both merchandise and services trade, rather than merchandise trade only. This takes advantage of country-level services trade data that have been published by the Australian Bureau of Statistics (ABS).

2 Merchandise trade statistics on an international merchandise trade basis are compiled from information submitted by exporters and importers or their agents to the *Australian Customs and Border Protection Service* (Customs and Border Protection). Adjustments for coverage, timing and valuation are made to international merchandise trade data to convert them to a balance of payments basis. The services data are sourced from the quarterly Survey of International Trade in Services and a range of administrative data and indicator series.

3 More comprehensive quarterly estimates of Australia's trade in goods and services, together with comprehensive details of Australia's balance of payments are included in the quarterly publication, *Balance of Payments and International Investment Position, Australia* (cat. no. 5302.0). Detailed monthly statistics on merchandise trade are available in time series spreadsheets on the ABS website or by subscription to tailored services. More information on the *International Trade in Services by Country, by State and by Detailed Services Category* are available on a financial year basis (cat. no. 5368.0.55.003) following the September issue of this publication and calendar year basis (cat. no. 5368.0.55.004) following the March issue of this publication.

CONCEPTS, SOURCES AND METHODS

4 The conceptual framework used in compiling Australia's merchandise trade statistics can be found in *International Merchandise Trade, Australia: Concepts, Sources and Methods, 2001* (cat. no. 5489.0).

5 The conceptual framework used in compiling Australia's balance of payments statistics is based on the International Monetary Fund's *Balance of Payments and International Investment Position Manual, Sixth Edition* (BPM6). Descriptions of the underlying concepts and structure of the balance of payments and the sources, methods and terms used in compiling estimates are presented in the publication *Balance of Payments and International Investment Position, Australia: Concepts, Sources and Methods, 1998* (cat. no. 5331.0). This version reflects the international standards prior to BPM6 and is currently being revised. The first part of the revised document was released on 8 March 2011, featuring only the Goods Account. Other components will be released as they become available. Further information on the key changes introduced with BPM6 can be found in the *Information paper: Implementation of new international statistical standards in the ABS National and International Accounts, September 2009* (cat. no. 5310.0.55.002).

6 To bring merchandise trade statistics on an international merchandise trade basis to a balance of payments basis, timing adjustments are made to ensure that the transaction is recorded in the period in which ownership changed, rather than in the period in which the transaction was recorded by Customs and Border Protection or the period in which the goods arrived in/departed from an Australian port. Adjustments are also made to account for the change of ownership of goods not included in merchandise trade statistics. Chapter 6 of the *Balance of Payments and International Investment Position, Australia: Concepts, Sources and Methods, 1998* (cat. no. 5331.0) provides more detail on the relationship between statistics on an international merchandise trade basis and on a balance of payments basis.

EXPLANATORY NOTES *continued*

CONCEPTS, SOURCES AND METHODS *continued*

7 International merchandise trade exports data presented for recent months in tables 12–15 of this publication are based on information initially reported by exporters to Customs and Border Protection. At the time of initial reporting to Customs and Border Protection the final prices may not be known for some commodities. Therefore, the information recorded for recent months for commodities like iron ore and coal can include a variety of prices including previous or current contract prices and the prevailing spot prices. Newly negotiated contract prices may not be fully reflected in the data first reported to Customs and Border Protection, and to compensate for this, the balance of payments series may reflect adjusted price levels.

8 The Concepts, Sources and Methods publications and information papers are available to download for free from the ABS website. Select *Statistics*, then select *By Catalogue Number*, and then the catalogue numbers as above.

CLASSIFICATIONS

9 The merchandise trade data on an international merchandise trade basis are presented using the following commodity classifications:

- the Harmonized System 2012 (available on request)
- the Standard International Trade Classification Revision 4 (SITC Rev. 4)
- the Classification by Broad Economic Categories (BEC)
- the industry classification: Australian and New Zealand Standard Industrial Classification, 2006 (ANZSIC 06) from July 2005.

10 The balance of payments 'goods and services' series are presented according to three classifications with the goods classifications derived from SITC Rev. 4 and BEC. The classifications are:

- for goods:
 - the Balance of Payments Commodities for Exports (BoPCE)
 - the Balance of Payments Broad Economic Categories (BoPBEC) for Imports
- for services:
 - the Extended Balance of Payments Services Classification (EBOPS).

ACCURACY, RELIABILITY AND REVISIONS

11 While every effort is made to ensure the accuracy and reliability of estimates, most series are subject to revision as more complete and accurate information becomes available. Care should be exercised in the use and interpretation of estimates in this publication. The transactions occurring in international trade in goods and services are of many different kinds, and therefore the compilation of trade estimates entails the use of a very wide range of statistical data of varying degrees of accuracy and timeliness. For further information on the monthly services series, see paragraph 25.

12 The revisions are applied differently for merchandise trade and balance of payments series. Each month, merchandise trade data are revised for the previous six months to incorporate latest available data.

13 For the balance of payments 'goods and services' series, in original terms, revisions in the July, October, January or April issues are limited to significant new and revised data from survey sources that have become available since the previous issue. This is to ensure the monthly series align with the comparable series in the most recent issue of the *Balance of Payments and International Investment Position, Australia* (cat. no. 5302.0). In the September issue revisions can be applied to the four previous financial years. In other issues revisions can be applied to the previous and current financial years to incorporate the latest available survey and administrative data.

14 In seasonally adjusted and trend terms, revisions may occur at any time point but tend to focus on the most recent estimates. Please also refer to paragraphs 17 and 18 (seasonal adjustment), and 19 (trend estimates) below.

EXPLANATORY NOTES *continued*

SIGN CONVENTION

15 In keeping with BPM6 conventions, balance of payments basis credit entries are shown with an implied positive sign and debit items are shown as negative entries. For statistics on an international merchandise trade basis, both imports and exports are shown without sign. References to balance of payments debit items in Key Figures, Key Points, and Analysis and Comments are made without regard to sign. The calculation of percentage changes on balance of payments debit items are made without regard to sign. Percentage change is not applicable if there is a change from surplus to deficit or vice versa.

SEASONALLY ADJUSTED AND TREND ESTIMATES

16 The estimates of international trade in goods and services on a balance of payments basis are seasonally adjusted, however the merchandise exports and imports statistics on an international merchandise trade basis are not. Monthly original estimates are volatile, being subject to calendar-related and large irregular influences. Seasonally adjusted estimates are derived by estimating and removing from the original series systematic calendar related effects, such as seasonal (e.g. Christmas), trading day and moving holiday (e.g. Easter) influences. Seasonal adjustment does not aim to remove the irregular or non-seasonal influences which may be present in any particular month. These irregular influences may reflect both random economic events and difficulties of statistical recording.

17 The seasonally adjusted statistics in this publication use the concurrent seasonal adjustment technique and Autoregressive Integrated Moving Average (ARIMA) modelling to estimate factors for the current and previous months. Under concurrent seasonal adjustment, the estimates of seasonal factors are fine tuned as new or revised original estimates become available each period. The seasonally adjusted estimates are subject to revisions at each reference month as the estimates of seasonal factors are improved.

18 ARIMA modelling relies on the characteristics of the series being analysed to project future period data. ARIMA modelling is used on a case-by-case basis where it results in reduced revisions to seasonally adjusted series when subsequent data becomes available. The projected values are temporary, intermediate values, that are only used internally to improve the estimation of the seasonal factors. The projected data do not affect the original estimates and are discarded at the end of the seasonal adjustment process. The ARIMA model is assessed as part of the annual review of each August issue of this publication with the majority of directly seasonally adjusted trade in goods and services time series using an ARIMA model.

19 The month-to-month movements of the seasonally adjusted estimates may not be reliable indicators of underlying behaviour because they include irregular or non-seasonal movements. Trend estimates reduce the effect of these movements as they are derived by applying a 13-term Henderson moving average to the seasonally adjusted series. The 13-term Henderson moving average (like all Henderson averages) is symmetric, but as the end of a time series is approached, asymmetric forms of the average are applied. While the asymmetric weights enable trend estimates for recent months to be produced, it does result in revisions to the estimates for the most recent six months as additional observations become available. Revisions to trend estimates can also occur because of revisions to the original data and as a result of the re-estimation of the seasonal factors. Trend estimates should be used with caution, especially around the time of unusual influences, until these have been appropriately taken into account.

20 Information papers and articles on time series methods are available on the ABS website:

- for seasonal adjustment methods, see *Information Paper: An Introductory Course on Time Series Analysis, Jan 2005* (cat. no. 1346.0.55.001) and *Time Series Analysis Frequently Asked Questions, 2003* (cat. no. 1346.0.55.002)

EXPLANATORY NOTES *continued*

SEASONALLY ADJUSTED AND TREND ESTIMATES *continued*

- for ARIMA modelling, see *Feature article: Use of ARIMA modelling to reduce revisions* in the October 2004 issue of *Australian Economic Indicators* (cat. no. 1350.0)
- for trend estimates methods, see *Information Paper: A Guide to Interpreting Time Series – Monitoring Trends* (cat. no. 1349.0)
- alternatively contact the Assistant Director, Time Series Analysis on (02) 6252 6345 or e-mail: time.series.analysis@abs.gov.au. The *ABS Privacy Policy* outlines how the ABS will handle any personal information that you provide to us. A copy of this policy is available on the ABS website through the 'Privacy' link.

ECONOMIC TERRITORY

21 In accordance with BPM6 definitions, Australia's economic territory, on a balance of payments basis, is the area under the effective control of the Australian government. It includes the land area, airspace, territorial waters, including jurisdiction over fishing rights and rights to fuels and minerals. Australian economic territory also includes territorial enclaves in the rest of the world. These are clearly demarcated areas of land, located in other countries and which are owned or rented by the Australian government for diplomatic, military, scientific or other purposes. Specifically, the economic territory of Australia consists of:

- Geographic Australia which includes Cocos (Keeling) Islands and Christmas Island
- Norfolk Island
- Australian Antarctic Territory
- Heard Island and McDonald Islands
- Territory of Ashmore Reef and Cartier Island
- Coral Sea Islands
- Australia's territorial enclaves overseas
- the Joint Petroleum Development Area (joint territory between Australia and Timor-Leste).

22 Because of administrative complexities and measurement difficulties, Norfolk Island transactions with the rest of the world will not always be captured in all relevant balance of payments statistics. Most of the transactions involving Norfolk Island are not material to Australia's trade performance and not capturing these transactions will not distort these statistics. However, any significant transactions will be identified and included in the relevant statistics.

COMMODITY BREAKDOWN OF GOODS

23 For details of the classifications used to present goods exports (credits) and imports (debits) on a balance of payments basis, see tables 6.6 and 6.7, respectively, in *Balance of Payments and International Investment Position, Australia: Concepts, Sources and Methods* (cat. no. 5331.0).

24 The international merchandise trade statistics shown in tables 12 and 13 are classified by the Standard International Trade Classification (SITC). Imports and exports of goods at a more detailed level are available from the time series spreadsheets on the ABS website. All data from July 2005 are presented according to SITC Rev. 4 and data prior to July 2005 are presented according to SITC Rev. 3. For details refer to the 'Classifications and Standards Update' in the July 2008 issue of this publication.

MONTHLY SERVICES SERIES

25 Monthly indicators for many of the services components that are only surveyed quarterly are not available. Monthly estimates for the freight and other transportation components of services credits in table 9 are derived by dividing the quarterly estimate by three. Freight debits are derived directly from imports data for the reference month as a difference between total merchandise Cost, Insurance and Freight (CIF) and Free On Board (FOB), adjusted to reflect timing and processing adjustments. For freight credits and other transportation credits and debits, estimates are derived by extrapolating the last quarter's data by an average of movements for the same quarter over the four previous years, and then dividing the estimate by three. Similarly other services estimates

EXPLANATORY NOTES *continued*

MONTHLY SERVICES SERIES

continued

are derived by extrapolating the last quarter's data by an average of movements for the same quarter over the previous four years, and then dividing the estimate by three. Noting estimates can be adjusted if additional information are available.

CONFIDENTIALITY OF MERCHANDISE TRADE STATISTICS

26 The release of statistics for certain merchandise trade commodities is restricted in order to prevent the identification of the activities of an individual business, where this is requested by the business concerned. These restrictions do not affect the total value of exports and imports, but they can affect statistics at the country, state and commodity levels, and other details only available on request such as Australian ports. For information on the confidentiality restrictions applied to the merchandise trade statistics in this publication, refer to the current issue of *International Merchandise Trade: Confidential Commodities List (CCL)* (cat. no. 5372.0.55.001).

27 Exports data that have the confidentiality restrictions 'No commodity details' or 'No value details' are now aggregated into a single confidential commodity code. For data prior to June 2013, these data are added back into the appropriate state total and country total (i.e. these totals show the correct level of trade). From June 2013 these confidential data are not added back. Instead the confidential data are published as 'No country details' in the country totals and 'State of origin not available' or 'State not available for publication' in the state totals. Therefore, country and state totals from June 2013 may not represent the actual amount of trade in each country/state but only the trade in commodities without a 'No commodity details' or 'No value details' restriction.

28 Imports data that have the confidentiality restrictions 'No commodity details' or 'No value details' are aggregated into a single confidential commodity code. For data prior to September 2008, these data are added back into the appropriate state total and country total (i.e. these totals show the correct level of trade). From September 2008 these confidential data are not added back. Instead the confidential data are published as 'No country details' in the country totals and 'State of destination not available' or 'State not available for publication' in the state totals. Therefore, country and state totals from September 2008 may not represent the actual amount of trade in each country/state but only the trade in commodities without a 'No commodity details' or 'No value details' restriction.

TOURISM RELATED SERVICES

29 The tourism related services memorandum items provide timely indicators of the movements in tourism related activities, not an absolute measure of the level of these activities. The tourism related indicator has been derived by combining total travel services (business, education-related and other personal travel) and passenger transportation services (which includes agency fees and commissions for air transport).

SERVICES BY STATE AND BY PARTNER COUNTRY

30 Annual services data by state, by country and detailed services are released twice yearly. Calendar year data are usually released following the March issue of this publication and financial year data are usually released following the September issue. Refer to Trade in Services data cubes under time series data for details.

31 Services credits are classified by the state of provision, while services debits are classified by the state of consumption. The state allocations for transportation, travel, postal and courier, and telecommunication services are based on a number of indicators including merchandise trade statistics by state, overseas passenger arrivals and departures by state of clearance and data provided by the *Department of Immigration and Border Protection*. The allocation for other services (about 25% of all trade in services) is primarily based on the location of the business reporting the information, which serves as a proxy for the state of provision/consumption of that service. The data should be used with care but are considered suitable for analysis over time.

EXPLANATORY NOTES *continued*

SERVICES BY STATE AND BY PARTNER COUNTRY *continued*

32 A comprehensive explanation of the data sources used and the methodology applied in the compilation of partner country statistics is provided in Chapter 17 of *Balance of Payments and International Investment Position, Australia: Concepts, Sources and Methods* (cat. no. 5331.0). Approximately 5% of total services credits and debits are either confidential, or unable to be allocated to individual countries.

ABS DATA AVAILABLE

33 More detailed balance of payments and international merchandise trade data, including forward seasonal factors are available as time series spreadsheets or data cubes from the ABS website. Merchandise trade data by commodity, country and state that are not on the ABS website may be available on request. Inquiries should be made to the National Information and Referral Service as shown on the back of this publication.

RELATED PRODUCTS AND PUBLICATIONS

34 Users may also wish to refer to the following publications which can be downloaded free of charge from the ABS website by using the 'Statistics' tab and selecting the relevant catalogue number:

- *Balance of Payments and International Investment Position, Australia* (cat. no. 5302.0) – issued quarterly
- *Balance of Payments – Goods and Services, Preliminary Quarterly Estimates* (cat. no. 5302.0.55.004) – issued quarterly
- *International Merchandise Imports, Australia* (cat. no. 5439.0) – issued monthly
- *International Trade Price Indexes, Australia* (cat. no. 6457.0) – issued quarterly
- *Balance of Payments and International Investment Position, Australia: Concepts, Sources and Methods* (cat. no. 5331.0)
- *Information Paper: Quality of Australian Balance of Payments Statistics* (cat. no. 5342.0)
- *International Merchandise Trade, Australia: Concepts, Sources and Methods* (cat. no. 5489.0)
- *A Guide to Australian Balance of Payments and International Investment Position Statistics* (cat. no. 5362.0.55.001).

35 Current publications and other products released by the ABS are available from the 'Statistics' tab on the ABS website. The ABS also issues a daily *Release Advice* on the website which details products to be released in the week ahead. A *foreign trade* theme page and a *balance of payments* theme page are available on the ABS website. Select *Topics @ a Glance – Economy – Foreign Trade* or *Balance of Payments*. This page provides direct links to all foreign trade and balance of payments related data and publications, recent changes and forthcoming events, links to relevant websites and a range of other information about the Australian International Accounts.

ROUNDING

36 Where figures have been rounded, discrepancies may occur between sums of the component items and totals. Percentage movements are calculated from data at the level of precision presented in this publication (i.e. \$m) except for international merchandise trade tables.

ABBREVIATIONS

- \$b billion (thousand million) dollars
- \$m million dollars
- ABS Australian Bureau of Statistics
- ADP automatic data processing
- ANZSIC Australian and New Zealand Standard Industrial Classification
- APEC Asia Pacific Economic Co-operation
- ARIMA autoregressive integrated moving average
- ASEAN Association of South-East Asian Nations
- BEC Classification by Broad Economic Categories

EXPLANATORY NOTES *continued*

BoPBEC	Balance of Payments Broad Economic Categories
BoPCE	Balance of Payments Commodities for Exports
BPM6	<i>Balance of Payments and International Investment Position Manual, Sixth Edition</i>
c.i.f.	cost, insurance and freight
EBOPS	Extended Balance of Payments Services Classification
f.o.b.	free on board
n.e.s.	not elsewhere specified
n.i.e.	not included elsewhere
OECD	Organisation for Economic Co-operation and Development
SAR	Special Administrative Region
SITC	Standard International Trade Classification

APPENDIX RELATED ARTICLES

Article	Source(a)	Issue / Release
Investment		
Foreign currency exposure	5308.0	Mar qtr 2013
Foreign ownership of equity	5302.0	Sep qtr 2007
Kangaroo bonds	1301.0	2006
Gross external debt	5302.0	Sep qtr 2003
Balance of payments		
International comparison of balance of payments statistics	5363.0	1998–99
Merchandise trade		
Export and Import Invoice Currencies, June 2014	5368.0	Jun 2014
Characteristics of Australian Exporters, 2012–13	5368.0.55.006	May 2014
100 years of international trade statistics	5368.0	Oct 2007
New methodology for deriving counts of Australian exports	5368.0	Feb 2006
Australia's Importers, 2003–04	5368.0	Nov 2004
Australia's Exporters, 2003–04	5368.0	Oct 2004
Foreign ownership of Australian exporters and importers, 2002–03	5496.0.55.001	Jun 2004
Australia's trade with the USA	5368.0	Mar 2004
Major commodities traded by Australia, 1991 to 2000	5422.0	Dec qtr 2000
Trade in services		
ABS International Tourism Estimates	5302.0	Dec 2011
Australian outward finance and insurance foreign affiliate trade, 2009–10	5485.0	Jun 2011
International trade in services by partner country, 2006, preliminary	5368.0	Dec 2006
Changes to International trade in services statistics, August 2006	5368.0	Aug 2006
Changes to International trade in services travel statistics	5368.0	Aug 2005
Finance		
Impact of the farm season on Australian production in 2002–03 and 2003–04	1301.0	2005
Recent trends in construction and first home buyers finance	5609.0	Mar 2002
Household sector data in the financial accounts	5232.0	Mar qtr 2002
Technical information		
Technical note – Low Value Threshold update	5368.0	Aug 2014
Technical note – Improvements in nominee estimates	5302.0	Jun qtr 2014
Revision to correspondences to AHECC and Customs Tariff, Aug 2014	5368.0.55.021	Aug 2014
Technical note – Low Value Threshold	5368.0	Aug 2013
Proposed Implementation of the New International Standard for International Merchandise Trade Statistics, 2013	5368.0.55.020	Aug 2013
Amendments to Schedule 4 of Customs Tariff, March 2013	5368.0.55.019	Mar 2013
Changes to AHECC and Customs Tariff, 2012	5368.0.55.017	Dec 2011
Experimental Statistics on International Shipping Container Movements, 2009–10	5368.0.55.018	Sep 2011
Implementation of new international statistical standards in ABS National and International Accounts, September 2009	5310.0.55.002	Oct 2009
Impact of revised international standards on monthly International Trade in Goods and Services, August 2009	5368.0.55.014	Oct 2009
Estimation of Workers' Remittances based on Balance of Payments and International Investment Position Manual, Sixth Edition, September 2009	5302.0.55.003	Aug 2009
Revisions to international standards in quarterly Balance of Payments and International Investment Position statistics from September 2009, 2009	5302.0.55.002	Jul 2009
Changes to International Trade in Goods Statistics – Countries and Ports, July 2009	5368.0.55.013	Jul 2009
Revisions to international standards in monthly international trade in goods and services statistics from August 2009, 2009	5368.0.55.012	Jun 2009
Changes to International Trade in Goods Industry Statistics, July 2009	5368.0.55.011	Dec 2008
Technical note 1 – Income on debt	5302.0	Jun qtr 2008
Technical note 2 – Use of CDI data	5302.0	Jun qtr 2008
Impact of introducing Revision 4 of the Standard International Trade Classification, 2008	5368.0.55.010	May 2008
Changes to international trade statistics July 2008, 2007 to 2008	5368.0.55.009	Jan 2008
Introduction of revised international standards in ABS economic statistics in 2009, 2007	5310.0.55.001	Sep 2007
Changes on 1 January 2007 to Statistical Codes in the AHECC and the Customs Tariff, 2007	1233.0.55.001	Nov 2006
ABS implementation in January 2007 of revisions to international trade classifications, 2007	5368.0.55.005	Jun 2006
Revised treatment of Goods for Processing in Merchandise Trade and Balance of Payments Statistics	5368.0	May 2006
Impact of Customs and ABS changes on import statistics from October 2005	5439.0	Oct 2005
ABS management of the impact of the implementation of the imports component of the New Customs System	5439.0	Aug 2005
Changes to country and port classifications	5368.0	May 2003
Implementation of New Customs Systems	5368.0	Aug 2004
The effect of customs changes on export statistics	5422.0	Jun qtr 2002
Data confidentiality	5422.0	Dec qtr 1999

(a) In the ABS website home page, select Statistics; By Catalogue Number; and click on the specified catalogue number and issue. Note: in some instances, a particular issue of the publication can be found in the Past & Future Releases page of the catalogue.

FOR MORE INFORMATION . . .

INTERNET **www.abs.gov.au** the ABS website is the best place for data from our publications and information about the ABS.

INFORMATION AND REFERRAL SERVICE

Our consultants can help you access the full range of information published by the ABS that is available free of charge from our website. Information tailored to your needs can also be requested as a 'user pays' service. Specialists are on hand to help you with analytical or methodological advice.

PHONE 1300 135 070

EMAIL client.services@abs.gov.au

FAX 1300 135 211

POST Client Services, ABS, GPO Box 796, Sydney NSW 2001

FREE ACCESS TO STATISTICS

All statistics on the ABS website can be downloaded free of charge.

WEB ADDRESS www.abs.gov.au